

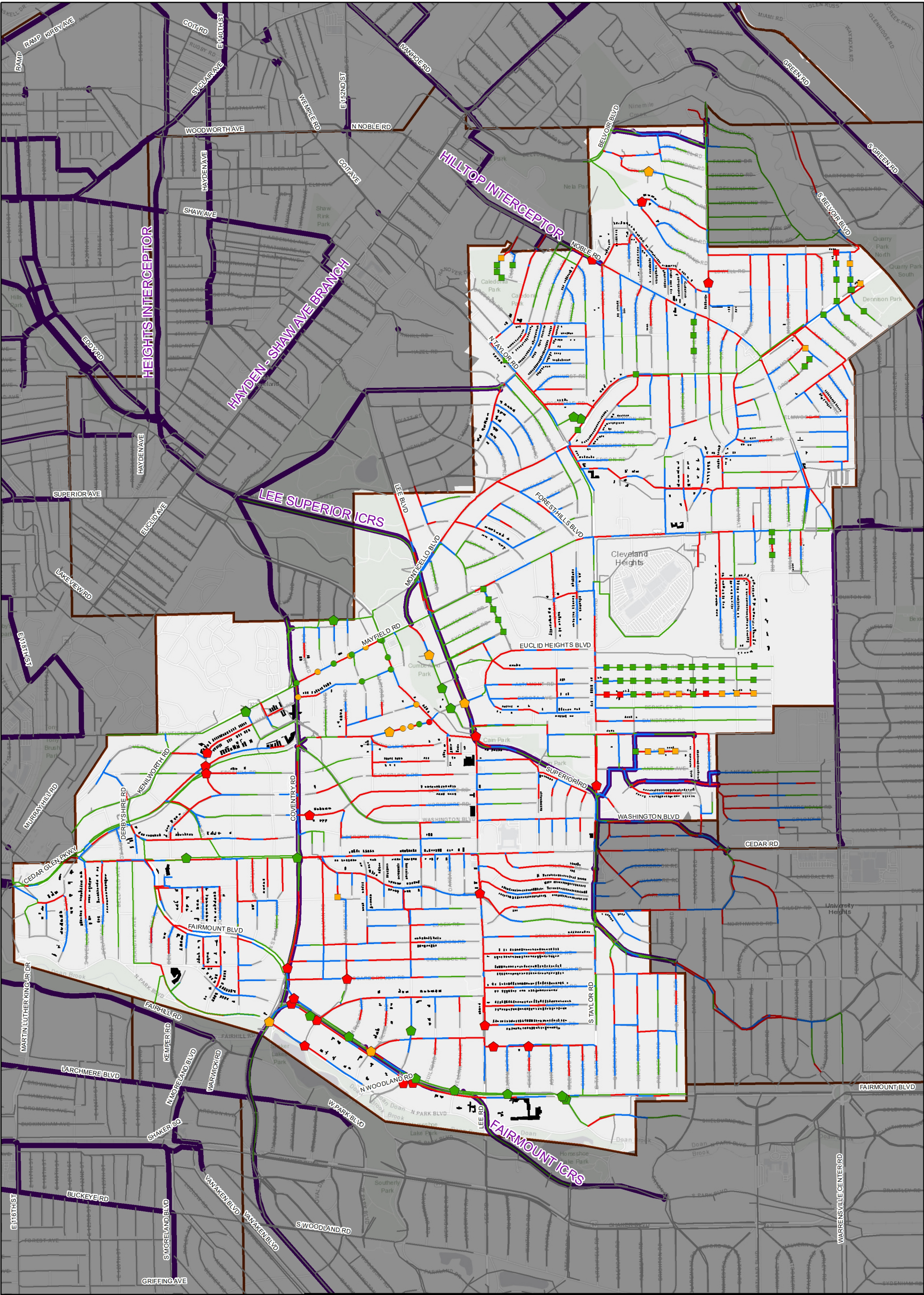
MGDWF	Divider Wall	Maintenance Access	Surcharged Status	BBU'
<div></div> Controlled [45]	<div></div> Inactive [70]	<div></div> Inactive [0]	<div></div> Non-Surcharged [2,981]	<div></div> [0]
<div></div> Activated < .01 MG [0]	<div></div> Active < .01 MG [0]	<div></div> Active < .01 MG [0]	<div></div> Backwater [3]	<div></div> Non-Modeled Local Sewers
<div></div> Activated > .01 MG [0]	<div></div> Active > .01 MG [0]	<div></div> Active > .01 MG [0]	<div></div> Capacity [0]	<div></div> District Sewers

1 - BBU Status Assumes 9 ft basement with 3 steps at entry at maximum ground elevation









N

0 2,300 4,600

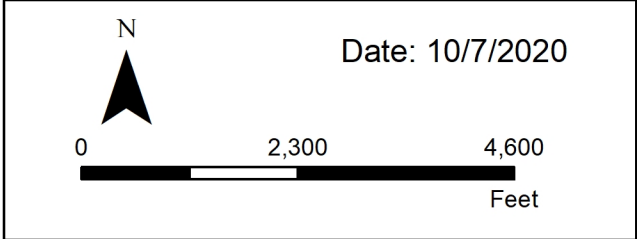
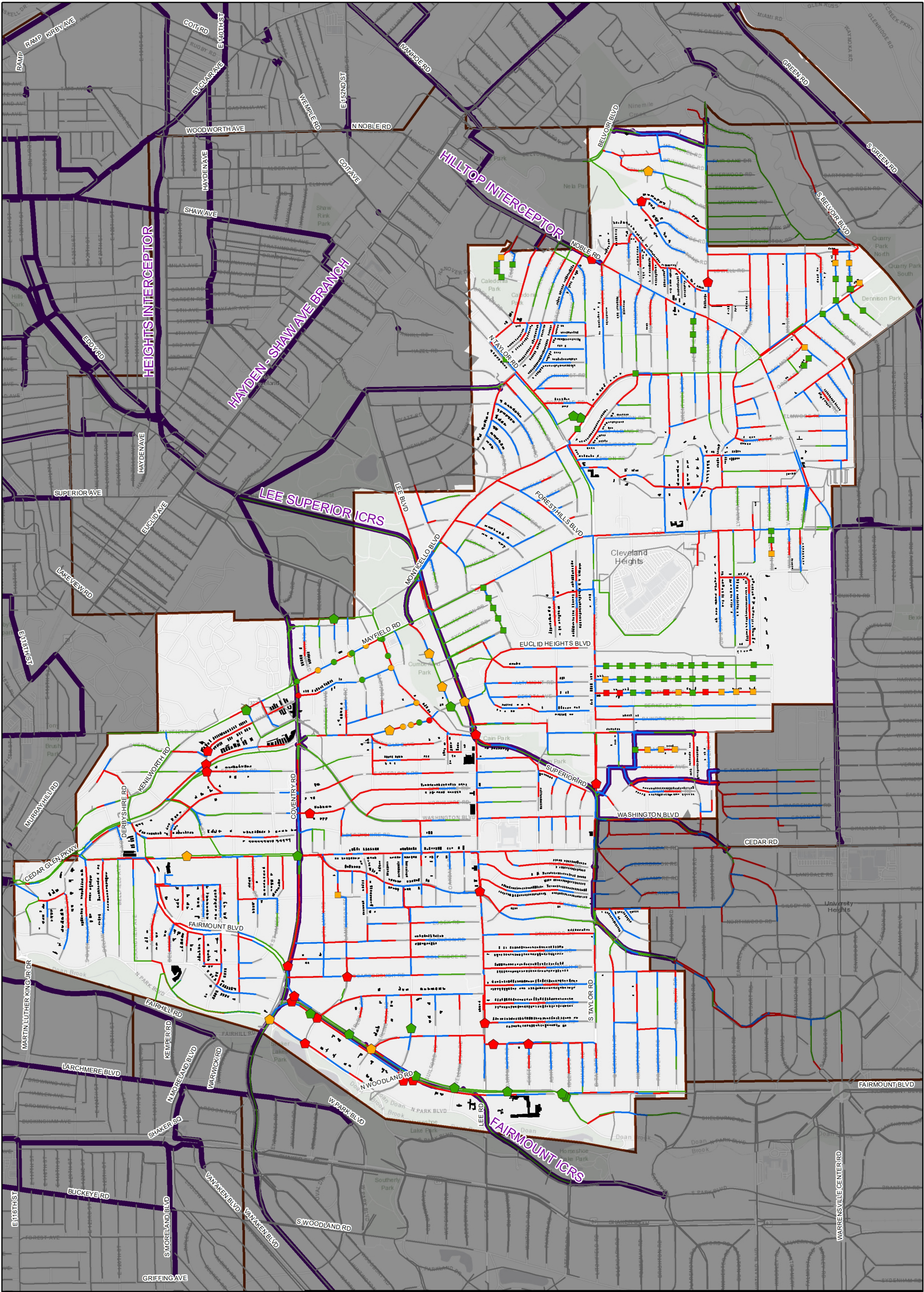
Feet

Date: 10/7/2020

<b>SSO Status</b> <ul style="list-style-type: none"><li>Controlled [18]</li><li>Activated &lt; .01 MG [6]</li><li>Activated &gt; .01 MG [21]</li></ul>	<b>Divider Wall</b> <ul style="list-style-type: none"><li>Inactive [53]</li><li>Active &lt; .01 MG [13]</li><li>Active &gt; .01 MG [4]</li></ul>	<b>Maintenance Access</b> <ul style="list-style-type: none"><li>Inactive [9]</li><li>Active &lt; .01 MG [7]</li><li>Active &gt; .01 MG [1]</li></ul>	<b>Surcharged Status</b> <ul style="list-style-type: none"><li>Non-Surcharged [963]</li><li>Backwater [980]</li><li>Capacity [1,041]</li></ul>	<b>BBU<sup>1</sup></b> <ul style="list-style-type: none"><li>[2,027]</li><li>Non-Modeled Local Sewers</li><li>District Sewers</li></ul>
--	--	--	--	---

1 - BBU Status Assumes 9 ft basement with 3 steps at entry at maximum ground elevation





SSO Status	Divider Wall	Maintenance Access	Surcharged Status	BBU <sup>1</sup>
Controlled [15]	Inactive [50]	Inactive [8]	Non-Surcharged [845]	BBU [2,583]
Activated < .01 MG [9]	Active < .01 MG [15]	Active < .01 MG [7]	Backwater [1,002]	Non-Modeled Local Sewers
Activated > .01 MG [21]	Active > .01 MG [5]	Active > .01 MG [2]	Capacity [1,137]	District Sewers

1 - BBU Status Assumes 9 ft basement with 3 steps at entry at maximum ground elevation



