

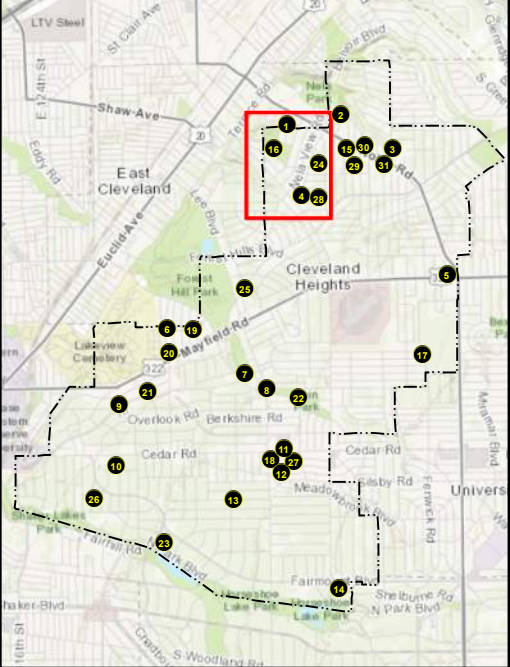
Map Sheet 1

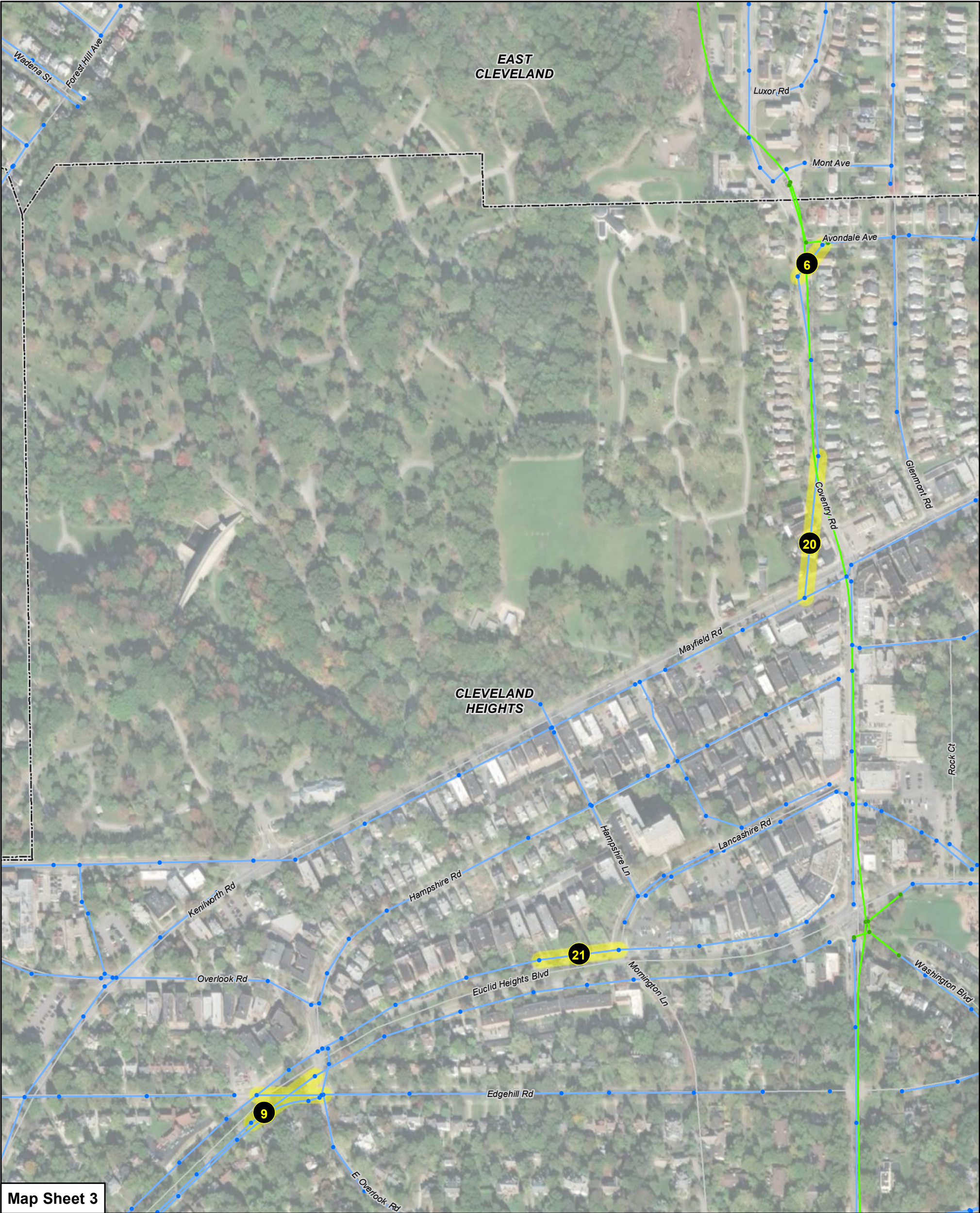
Legend

- Community Border
- District_Manhole
- Local_Manhole
- District Pump Station
- Local Pump Station
- HFC Locations



Map Key	High Frequency Cleaning Locations	Length (LF)	Identified From	Cause
1	Eloise in north section	450	From CMOM March 2016	Residential Grease
2	Randolph intersecting Woodview	200	From CMOM March 2016	Pump Station
3	Quilliams (from Noble to Lowell)	850	From CMOM March 2016	Residential Grease
4	Sylvanhurst at Henderson	460	From CMOM March 2016	Residential Grease
5	Mayfield (south side) from Noble to Warrensville Center	510	From CMOM March 2016	Commercial Grease
6	Coventry at Avondale	200	From CMOM March 2016	Residential Grease
7	Superior and Euclid Heights Blvd	200	From CMOM March 2016	Residential Grease
8	Superior and Lee	200	From CMOM March 2016	Residential Grease
9	Euclid Heights at Edgehill	600	From CMOM March 2016	Residential Grease
10	Nottingham Lane	1,400	From CMOM March 2016	Residential Grease
11	Kildare (lower)	200	From CMOM March 2016	Residential Grease
12	Tullamore	200	From CMOM March 2016	Residential Grease
13	Coleridge - Stratford - Corydon	1,200	From CMOM March 2016	Roots
14	North Park Lane (Shelburne to City Line)	900	From CMOM March 2016	Residential Grease and Roots
15	943 Elbon to Noble	400	2007 Sewer Cleaning Report	Residential Grease
16	Dresden Road	1000		Residential Grease
17	Shannon at Maple	750	2007 Sewer Cleaning Report	Residential Grease
18	2195 Lee Road	330	2007 Sewer Cleaning Report	Commercial Grease
19	Eddington Road	730	2007 Sewer Cleaning Report	Residential Grease
20	1714 Coventry Road	540	2008 Sewer Cleaning Report	Residential Grease
21	2684 Euclid Heights Blvd	570	2009 Sewer Cleaning Report	Residential Grease
22	Superior between Redwood and Goodnor	250	2009 Sewer Cleaning Report	Residential Grease
23	North Park btw Coventry and Arlington	2,800		Roots
24	3390 Winsford Road	250	Cleaning Reports	Residential Grease
25	Bolton Road & Monticello Blvd	220	Cleaning Reports	Residential Grease
26	2520 - 2334 Ardleigh Drive	460	Cleaning Reports	Residential Grease
27	3244 Cedarbrook Road	200	Cleaning Reports	Residential Grease
28	Henderson Road	1,000	Identified during HHI LSSES	Roots
29	Pembroke Road	1,700	Identified during HHI LSSES	Roots
30	Noble Rd btw Pembroke and Yellowstone	630	Cleveland Heights Phase I SSSES	Residential Grease
31	Pennfield Rd at Noble	200	Cleveland Heights Phase I SSSES	Residential Grease





Map Sheet 3

Legend

Community Border

District_Manhole

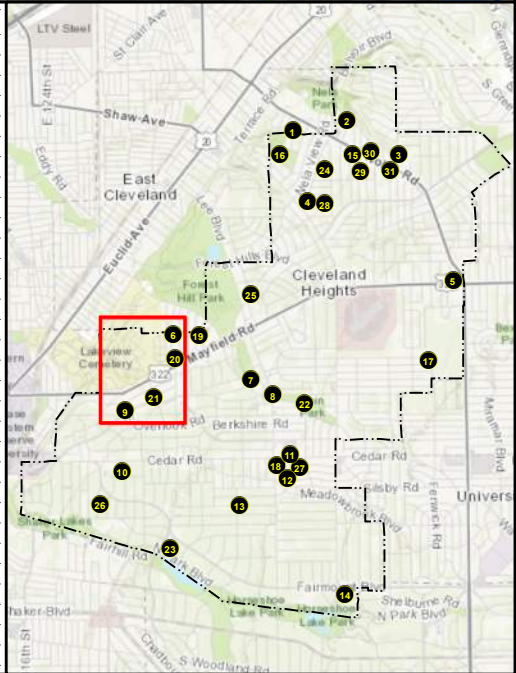
Local_Manhole

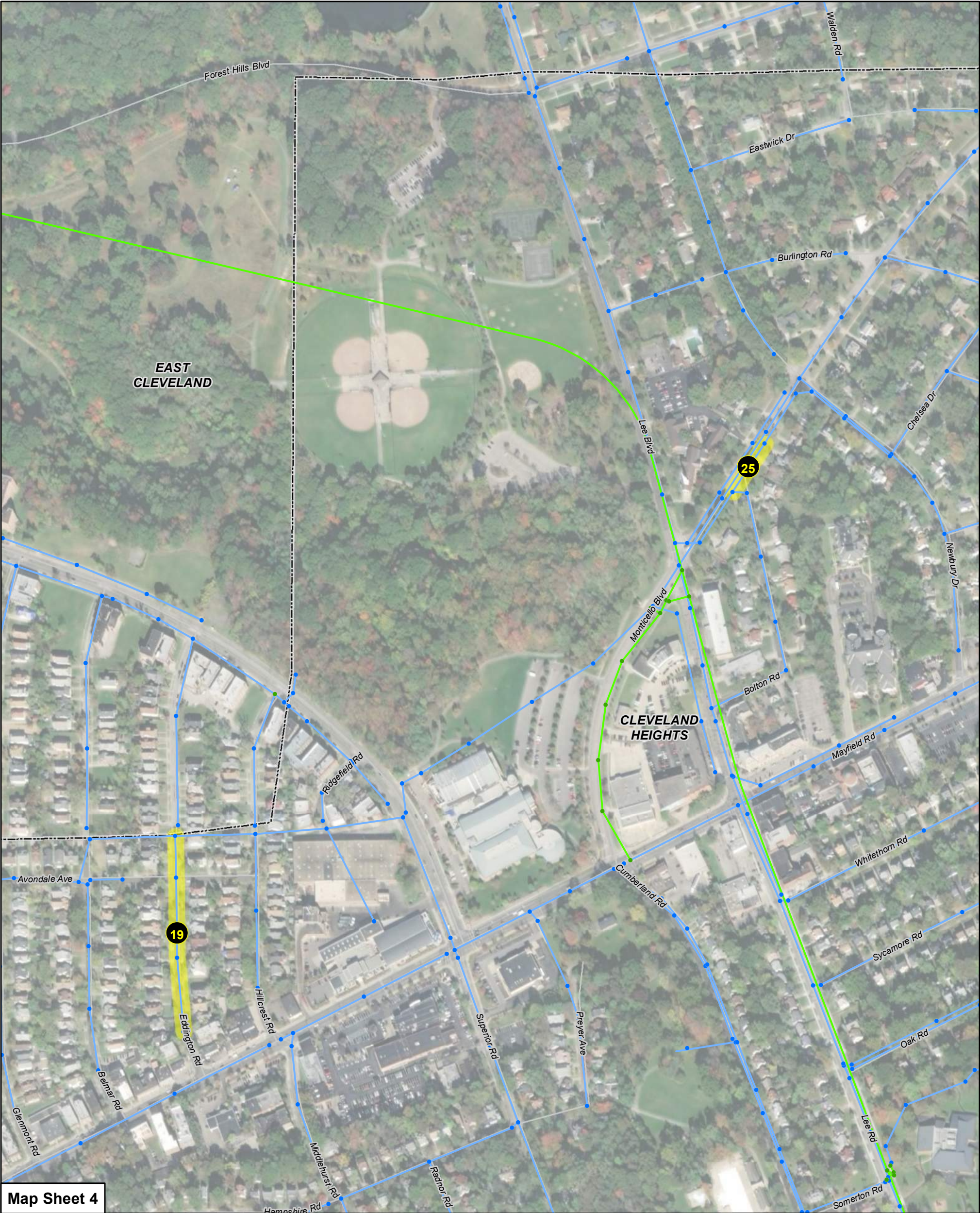
District Pump Station

Local Pump Station

HFC Locations

Map Key	High Frequency Cleaning Locations	Length (LF)	Identified From	Cause
1	Eloise in north section	450	From CMOM March 2016	Residential Grease
2	Randolph intersecting Woodview	200	From CMOM March 2016	Pump Station
3	Quilliams (from Noble to Lowell)	850	From CMOM March 2016	Residential Grease
4	Sylvanhurst at Henderson	460	From CMOM March 2016	Residential Grease
5	Mayfield (south side) from Noble to Warrensville Center	510	From CMOM March 2016	Commercial Grease
6	Coventry at Avondale	200	From CMOM March 2016	Residential Grease
7	Superior and Euclid Heights Blvd	200	From CMOM March 2016	Residential Grease
8	Superior and Lee	200	From CMOM March 2016	Residential Grease
9	Euclid Heights at Edgehill	600	From CMOM March 2016	Residential Grease
10	Nottingham Lane	1,400	From CMOM March 2016	Residential Grease
11	Kildare (lower)	200	From CMOM March 2016	Residential Grease
12	Tullamore	200	From CMOM March 2016	Residential Grease
13	Coleridge - Stratford - Corydon	1,200	From CMOM March 2016	Roots
14	North Park Lane (Shelburne to City Line)	900	From CMOM March 2016	Residential Grease and Roots
15	943 Elbon to Noble	400	2007 Sewer Cleaning Report	Residential Grease
16	Dresdon Road	1000		Residential Grease
17	Shannon at Maple	750	2007 Sewer Cleaning Report	Residential Grease
18	2195 Lee Road	330	2007 Sewer Cleaning Report	Commercial Grease
19	Eddington Road	730	2007 Sewer Cleaning Report	Residential Grease
20	1714 Coventry Road	540	2008 Sewer Cleaning Report	Residential Grease
21	2684 Euclid Heights Blvd	570	2009 Sewer Cleaning Report	Residential Grease
22	Superior between Redwood and Goodnor	250	2009 Sewer Cleaning Report	Residential Grease
23	North Park btw Coventry and Arlington	2,800		Roots
24	3390 Winsford Road	250	Cleaning Reports	Residential Grease
25	Bolton Road & Monticello Blvd	220	Cleaning Reports	Residential Grease
26	2520 - 2334 Ardleigh Drive	460	Cleaning Reports	Residential Grease
27	3244 Cedarbrook Road	200	Cleaning Reports	Residential Grease
28	Henderson Road	1,000	Identified during HHI LSSES	Roots
29	Pembroke Road	1,700	Identified during HHI LSSES	Roots
30	Noble Rd btw Pembroke and Yellowstone	630	Cleveland Heights Phase I SSSES	Residential Grease
31	Pennfield Rd at Noble	200	Cleveland Heights Phase I SSSES	Residential Grease





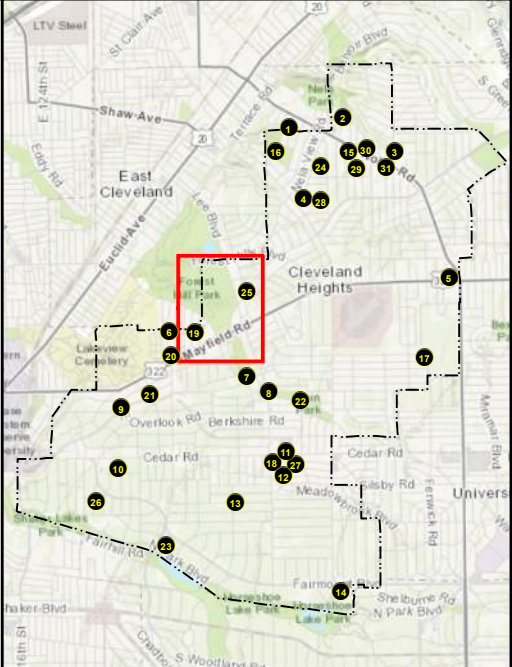
Map Sheet 4

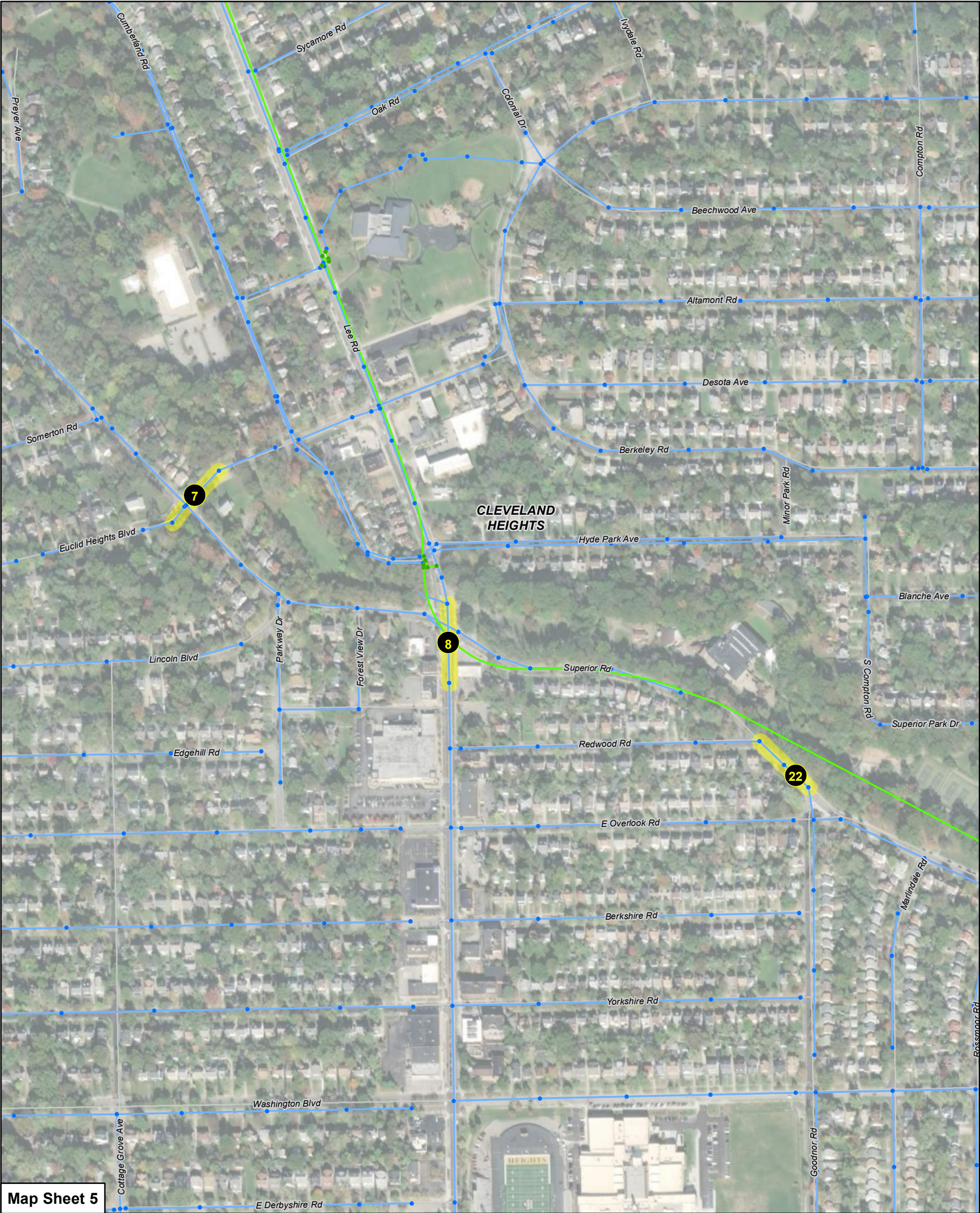
Legend

- Community Border
- District_Manhole
- Local_Manhole
- District Pump Station
- Local Pump Station
- HFC Locations



Map Key	High Frequency Cleaning Locations	Length (LF)	Identified From	Cause
1	Eloise in north section	450	From CMOM March 2016	Residential Grease
2	Randolph intersecting Woodview	200	From CMOM March 2016	Pump Station
3	Quilliams (from Noble to Lowell)	850	From CMOM March 2016	Residential Grease
4	Sylvanhurst at Henderson	460	From CMOM March 2016	Residential Grease
5	Mayfield (south side) from Noble to Warrensville Center	510	From CMOM March 2016	Commercial Grease
6	Coventry at Avondale	200	From CMOM March 2016	Residential Grease
7	Superior and Euclid Heights Blvd	200	From CMOM March 2016	Residential Grease
8	Superior and Lee	200	From CMOM March 2016	Residential Grease
9	Euclid Heights at Edgehill	600	From CMOM March 2016	Residential Grease
10	Nottingham Lane	1,400	From CMOM March 2016	Residential Grease
11	Kildare (lower)	200	From CMOM March 2016	Residential Grease
12	Tullamore	200	From CMOM March 2016	Residential Grease
13	Coleridge - Stratford - Corydon	1,200	From CMOM March 2016	Roots
14	North Park Lane (Shelburne to City Line)	900	From CMOM March 2016	Residential Grease and Roots
15	943 Elbon to Noble	400	2007 Sewer Cleaning Report	Residential Grease
16	Dresdon Road	1000		Residential Grease
17	Shannon at Maple	750	2007 Sewer Cleaning Report	Residential Grease
18	2195 Lee Road	330	2007 Sewer Cleaning Report	Commercial Grease
19	Eddington Road	730	2007 Sewer Cleaning Report	Residential Grease
20	1714 Coventry Road	540	2008 Sewer Cleaning Report	Residential Grease
21	2684 Euclid Heights Blvd	570	2009 Sewer Cleaning Report	Residential Grease
22	Superior between Redwood and Goodnor	250	2009 Sewer Cleaning Report	Residential Grease
23	North Park btw Coventry and Arlington	2,800		Roots
24	3390 Winsford Road	250	Cleaning Reports	Residential Grease
25	Bolton Road & Monticello Blvd	220	Cleaning Reports	Residential Grease
26	2520 - 2334 Ardleigh Drive	460	Cleaning Reports	Residential Grease
27	3244 Cedarbrook Road	200	Cleaning Reports	Residential Grease
28	Henderson Road	1,000	Identified during HHI LSSES	Roots
29	Pembroke Road	1,700	Identified during HHI LSSES	Roots
30	Noble Rd btw Pembroke and Yellowstone	630	Cleveland Heights Phase I SSSES	Residential Grease
31	Pennfield Rd at Noble	200	Cleveland Heights Phase I SSSES	Residential Grease





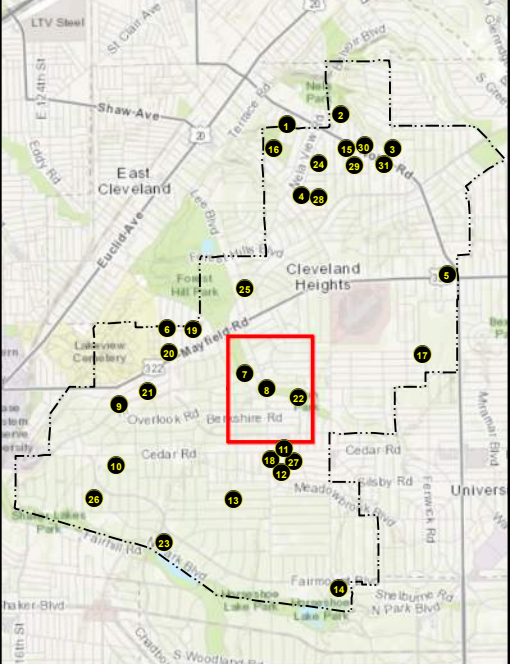
Map Sheet 5

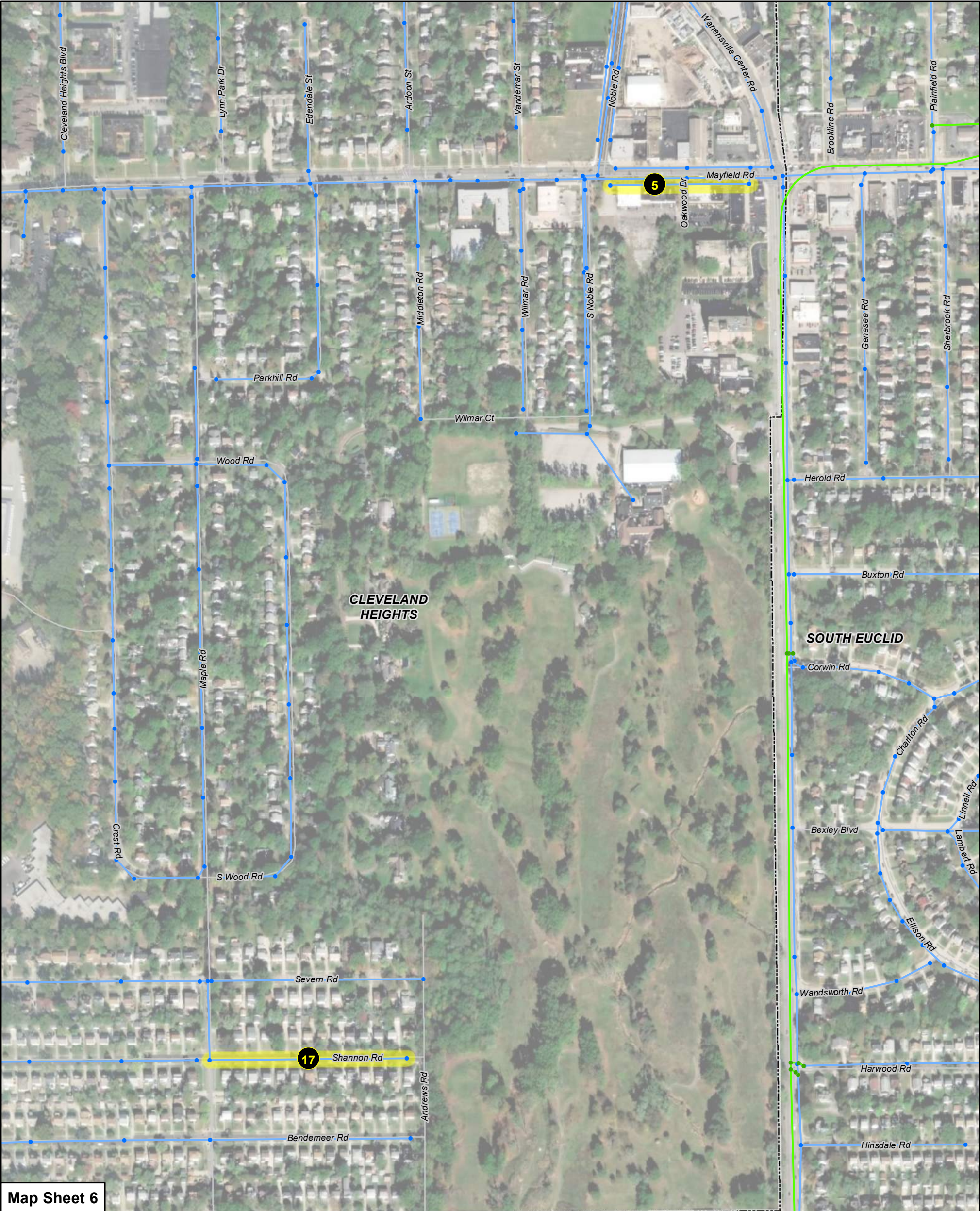
Legend

- Community Border
- District_Manhole
- Local_Manhole
- District Pump Station
- Local Pump Station
- HFC Locations



Map Key	High Frequency Cleaning Locations	Length (LF)	Identified From	Cause
1	Eloise in north section	450	From CMOM March 2016	Residential Grease
2	Randolph intersecting Woodview	200	From CMOM March 2016	Pump Station
3	Quilliams (from Noble to Lowell)	850	From CMOM March 2016	Residential Grease
4	Sylvanhurst at Henderson	460	From CMOM March 2016	Residential Grease
5	Mayfield (south side) from Noble to Warrensville Center	510	From CMOM March 2016	Commercial Grease
6	Coventry at Avondale	200	From CMOM March 2016	Residential Grease
7	Superior and Euclid Heights Blvd	200	From CMOM March 2016	Residential Grease
8	Superior and Lee	200	From CMOM March 2016	Residential Grease
9	Euclid Heights at Edgehill	600	From CMOM March 2016	Residential Grease
10	Nottingham Lane	1,400	From CMOM March 2016	Residential Grease
11	Kildare (lower)	200	From CMOM March 2016	Residential Grease
12	Tullamore	200	From CMOM March 2016	Residential Grease
13	Coleridge - Stratford - Corydon	1,200	From CMOM March 2016	Roots
14	North Park Lane (Shelburne to City Line)	900	From CMOM March 2016	Residential Grease and Roots
15	943 Elbon to Noble	400	2007 Sewer Cleaning Report	Residential Grease
16	Dresdon Road	1000		Residential Grease
17	Shannon at Maple	750	2007 Sewer Cleaning Report	Residential Grease
18	2195 Lee Road	330	2007 Sewer Cleaning Report	Commercial Grease
19	Eddington Road	730	2007 Sewer Cleaning Report	Residential Grease
20	1714 Coventry Road	540	2008 Sewer Cleaning Report	Residential Grease
21	2684 Euclid Heights Blvd	570	2009 Sewer Cleaning Report	Residential Grease
22	Superior between Redwood and Goodnor	250	2009 Sewer Cleaning Report	Residential Grease
23	North Park btw Coventry and Arlington	2,800		Roots
24	3390 Winsford Road	250	Cleaning Reports	Residential Grease
25	Bolton Road & Monticello Blvd	220	Cleaning Reports	Residential Grease
26	2520 - 2334 Ardleigh Drive	460	Cleaning Reports	Residential Grease
27	3244 Cedarbrook Road	200	Cleaning Reports	Residential Grease
28	Henderson Road	1,000	Identified during HHI LSSES	Roots
29	Pembroke Road	1,700	Identified during HHI LSSES	Roots
30	Noble Rd btw Pembroke and Yellowstone	630	Cleveland Heights Phase I SSSES	Residential Grease
31	Pennfield Rd at Noble	200	Cleveland Heights Phase I SSSES	Residential Grease





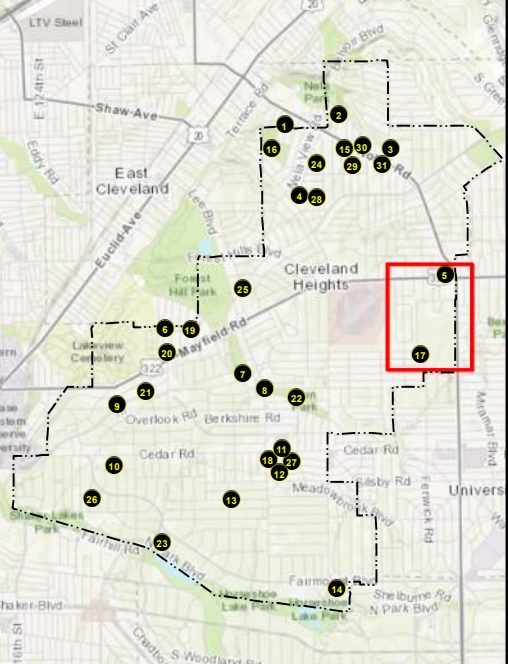
Map Sheet 6

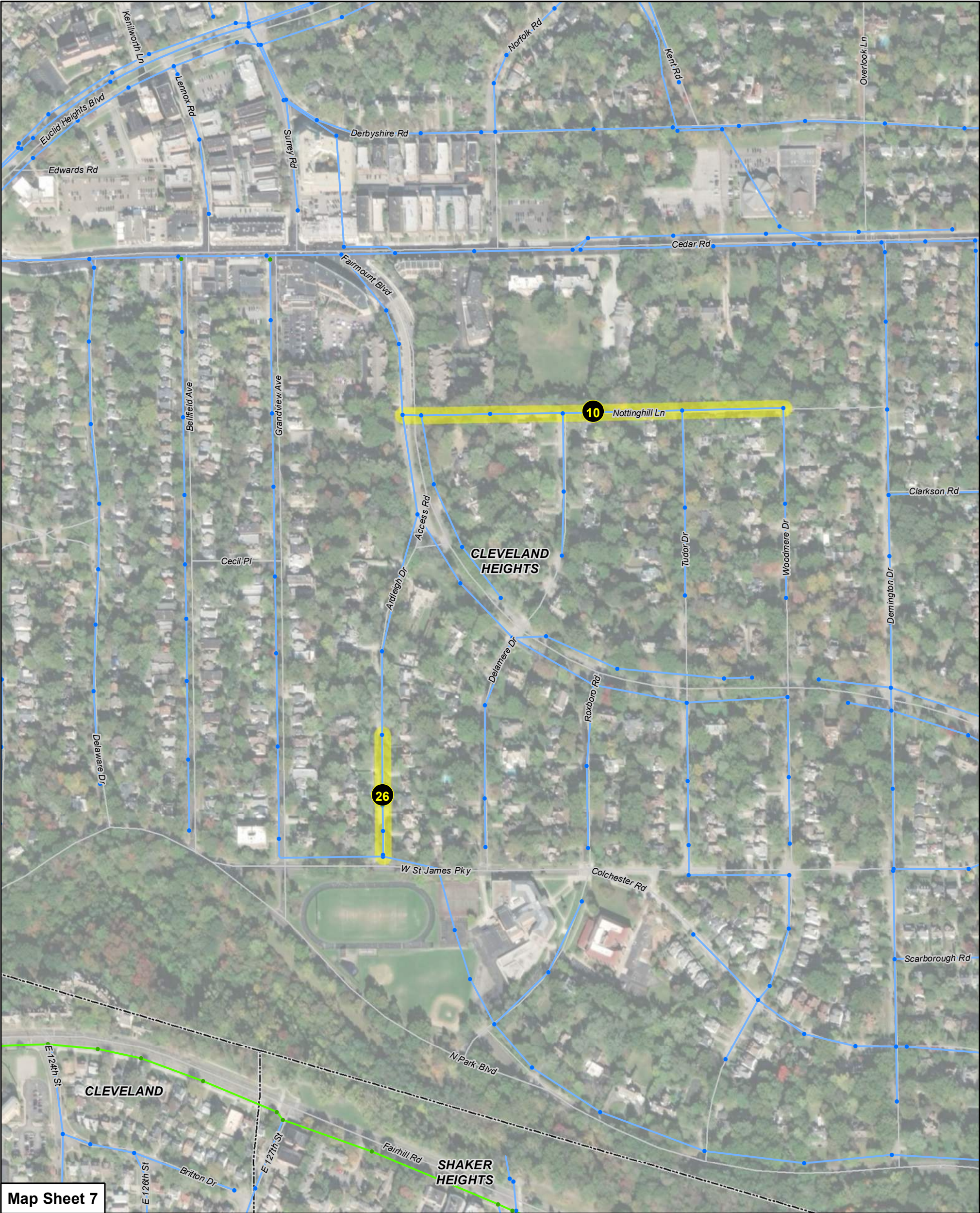
Legend

- Community Border
- District_Manhole
- Local_Manhole
- District Pump Station
- Local Pump Station
- HFC Locations



Map Key	High Frequency Cleaning Locations	Length (LF)	Identified From	Cause
1	Eloise in north section	450	From CMOM March 2016	Residential Grease
2	Randolph intersecting Woodview	200	From CMOM March 2016	Pump Station
3	Quilliams (from Noble to Lowell)	850	From CMOM March 2016	Residential Grease
4	Sylvanhurst at Henderson	460	From CMOM March 2016	Residential Grease
5	Mayfield (south side) from Noble to Warrensville Center	510	From CMOM March 2016	Commercial Grease
6	Coventry at Avondale	200	From CMOM March 2016	Residential Grease
7	Superior and Euclid Heights Blvd	200	From CMOM March 2016	Residential Grease
8	Superior and Lee	200	From CMOM March 2016	Residential Grease
9	Euclid Heights at Edgehill	600	From CMOM March 2016	Residential Grease
10	Nottingham Lane	1,400	From CMOM March 2016	Residential Grease
11	Kildare (lower)	200	From CMOM March 2016	Residential Grease
12	Tullamore	200	From CMOM March 2016	Residential Grease
13	Coleridge - Stratford - Corydon	1,200	From CMOM March 2016	Roots
14	North Park Lane (Shelburne to City Line)	900	From CMOM March 2016	Residential Grease and Roots
15	943 Elbon to Noble	400	2007 Sewer Cleaning Report	Residential Grease
16	Dresdon Road	1000		Residential Grease
17	Shannon at Maple	750	2007 Sewer Cleaning Report	Residential Grease
18	2195 Lee Road	330	2007 Sewer Cleaning Report	Commercial Grease
19	Eddington Road	730	2007 Sewer Cleaning Report	Residential Grease
20	1714 Coventry Road	540	2008 Sewer Cleaning Report	Residential Grease
21	2684 Euclid Heights Blvd	570	2009 Sewer Cleaning Report	Residential Grease
22	Superior between Redwood and Goodnor	250	2009 Sewer Cleaning Report	Residential Grease
23	North Park btw Coventry and Arlington	2,800		Roots
24	3390 Winsford Road	250	Cleaning Reports	Residential Grease
25	Bolton Road & Monticello Blvd	220	Cleaning Reports	Residential Grease
26	2520 - 2334 Ardleigh Drive	460	Cleaning Reports	Residential Grease
27	3244 Cedarbrook Road	200	Cleaning Reports	Residential Grease
28	Henderson Road	1,000	Identified during HHI LSSES	Roots
29	Pembroke Road	1,700	Identified during HHI LSSES	Roots
30	Noble Rd btw Pembroke and Yellowstone	630	Cleveland Heights Phase I SSSES	Residential Grease
31	Pennfield Rd at Noble	200	Cleveland Heights Phase I SSSES	Residential Grease





Map Sheet 7

Legend

Community Border

District_Manhole

Local_Manhole

District Pump Station

Local Pump Station

1

HFC Locations

Map Key	High Frequency Cleaning Locations	Length (LF)	Identified From	Cause
1	Eloise in north section	450	From CMOM March 2016	Residential Grease
2	Randolph intersecting Woodview	200	From CMOM March 2016	Pump Station
3	Quilliams (from Noble to Lowell)	850	From CMOM March 2016	Residential Grease
4	Sylvanhurst at Henderson	460	From CMOM March 2016	Residential Grease
5	Mayfield (south side) from Noble to Warrensville Center	510	From CMOM March 2016	Commercial Grease
6	Coventry at Avondale	200	From CMOM March 2016	Residential Grease
7	Superior and Euclid Heights Blvd	200	From CMOM March 2016	Residential Grease
8	Superior and Lee	200	From CMOM March 2016	Residential Grease
9	Euclid Heights at Edgehill	600	From CMOM March 2016	Residential Grease
10	Nottinghill Lane	1,400	From CMOM March 2016	Residential Grease
11	Kildare (lower)	200	From CMOM March 2016	Residential Grease
12	Tullamore	200	From CMOM March 2016	Residential Grease
13	Coleridge - Stratford - Corydon	1,200	From CMOM March 2016	Roots
14	North Park Lane (Shelburne to City Line)	900	From CMOM March 2016	Residential Grease and Roots
15	943 Elbon to Noble	400	2007 Sewer Cleaning Report	Residential Grease
16	Dresdon Road	1000		Residential Grease
17	Shannon at Maple	750	2007 Sewer Cleaning Report	Residential Grease
18	2195 Lee Road	330	2007 Sewer Cleaning Report	Commercial Grease
19	Eddington Road	730	2007 Sewer Cleaning Report	Residential Grease
20	1714 Coventry Road	540	2008 Sewer Cleaning Report	Residential Grease
21	2684 Euclid Heights Blvd	570	2009 Sewer Cleaning Report	Residential Grease
22	Superior between Redwood and Goodnor	250	2009 Sewer Cleaning Report	Residential Grease
23	North Park btw Coventry and Arlington	2,800		Roots
24	3390 Winsford Road	250	Cleaning Reports	Residential Grease
25	Bolton Road & Monticello Blvd	220	Cleaning Reports	Residential Grease
26	2520 - 2334 Ardleigh Drive	460	Cleaning Reports	Residential Grease
27	3244 Cedarbrook Road	200	Cleaning Reports	Residential Grease
28	Henderson Road	1,000	Identified during HHI LSSES	Roots
29	Pembroke Road	1,700	Identified during HHI LSSES	Roots
30	Noble Rd btw Pembroke and Yellowstone	630	Cleveland Heights Phase I SSSES	Residential Grease
31	Pennfield Rd at Noble	200	Cleveland Heights Phase I SSSES	Residential Grease

Document Path: R:\Misc Projects\NECRSD\ClevHights_HFC\MapClevHights_HFC.mxd



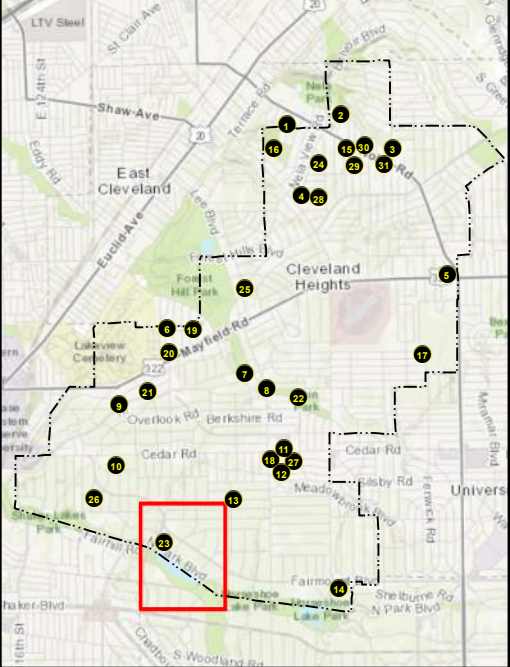
Map Sheet 8

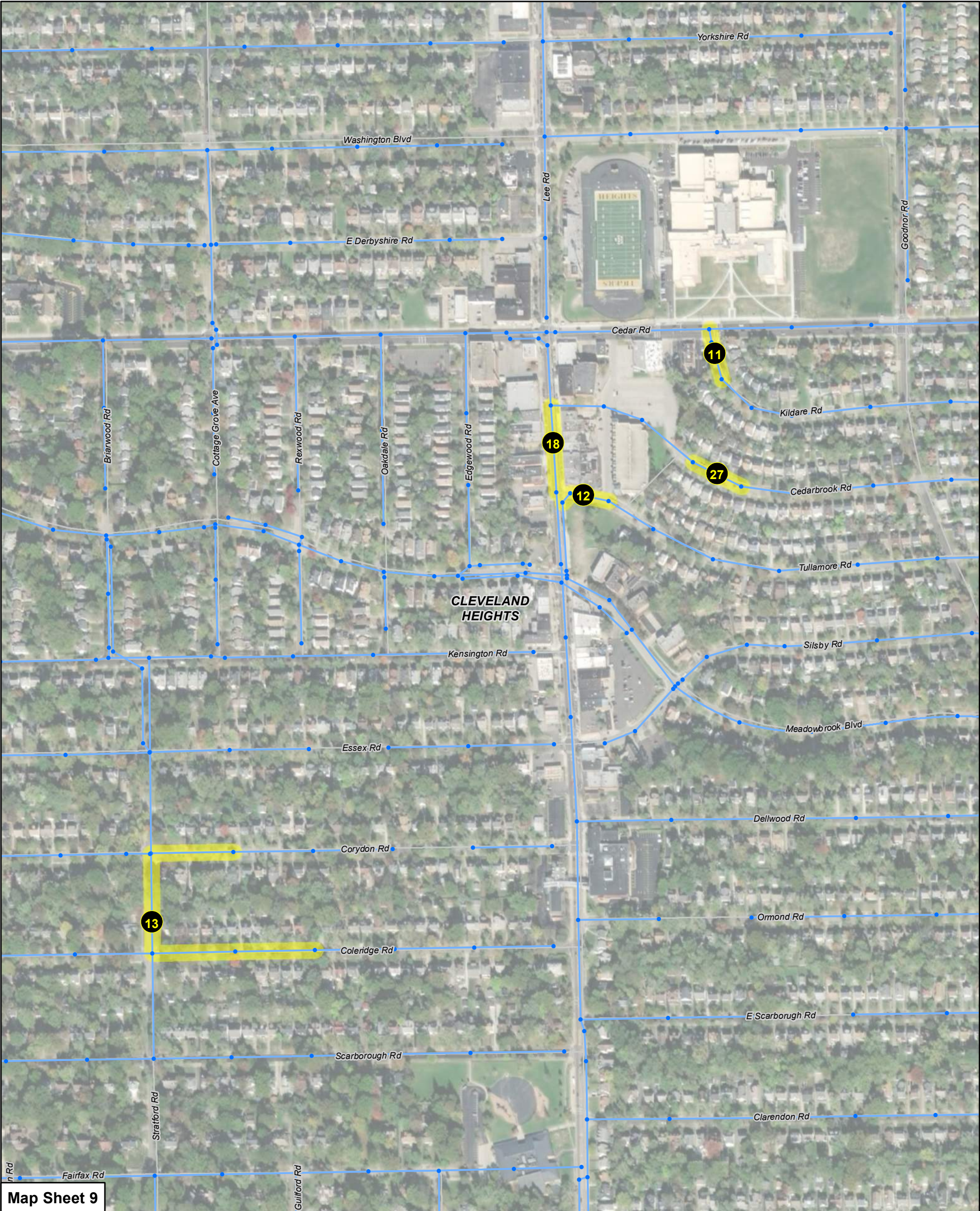
Legend

- Community Border
- District_Manhole
- Local_Manhole
- District Pump Station
- Local Pump Station
- HFC Locations



Map Key	High Frequency Cleaning Locations	Length (LF)	Identified From	Cause
1	Eloise in north section	450	From CMOM March 2016	Residential Grease
2	Randolph intersecting Woodview	200	From CMOM March 2016	Pump Station
3	Quilliams (from Noble to Lowell)	850	From CMOM March 2016	Residential Grease
4	Sylvanhurst at Henderson	460	From CMOM March 2016	Residential Grease
5	Mayfield (south side) from Noble to Warrensville Center	510	From CMOM March 2016	Commercial Grease
6	Coventry at Avondale	200	From CMOM March 2016	Residential Grease
7	Superior and Euclid Heights Blvd	200	From CMOM March 2016	Residential Grease
8	Superior and Lee	200	From CMOM March 2016	Residential Grease
9	Euclid Heights at Edgehill	600	From CMOM March 2016	Residential Grease
10	Nottingham Lane	1,400	From CMOM March 2016	Residential Grease
11	Kildare (lower)	200	From CMOM March 2016	Residential Grease
12	Tullamore	200	From CMOM March 2016	Residential Grease
13	Coleridge - Stratford - Corydon	1,200	From CMOM March 2016	Roots
14	North Park Lane (Shelburne to City Line)	900	From CMOM March 2016	Residential Grease and Roots
15	943 Elbon to Noble	400	2007 Sewer Cleaning Report	Residential Grease
16	Dresden Road	1000		Residential Grease
17	Shannon at Maple	750	2007 Sewer Cleaning Report	Residential Grease
18	2195 Lee Road	330	2007 Sewer Cleaning Report	Commercial Grease
19	Eddington Road	730	2007 Sewer Cleaning Report	Residential Grease
20	1714 Coventry Road	540	2008 Sewer Cleaning Report	Residential Grease
21	2684 Euclid Heights Blvd	570	2009 Sewer Cleaning Report	Residential Grease
22	Superior between Redwood and Goodnor	250	2009 Sewer Cleaning Report	Residential Grease
23	North Park btw Coventry and Arlington	2,800		Roots
24	3390 Winsford Road	250	Cleaning Reports	Residential Grease
25	Bolton Road & Monticello Blvd	220	Cleaning Reports	Residential Grease
26	2520 - 2334 Ardleigh Drive	460	Cleaning Reports	Residential Grease
27	3244 Cedarbrook Road	200	Cleaning Reports	Residential Grease
28	Henderson Road	1,000	Identified during HHI LSSES	Roots
29	Pembroke Road	1,700	Identified during HHI LSSES	Roots
30	Noble Rd btw Pembroke and Yellowstone	630	Cleveland Heights Phase I SSSES	Residential Grease
31	Pennfield Rd at Noble	200	Cleveland Heights Phase I SSSES	Residential Grease





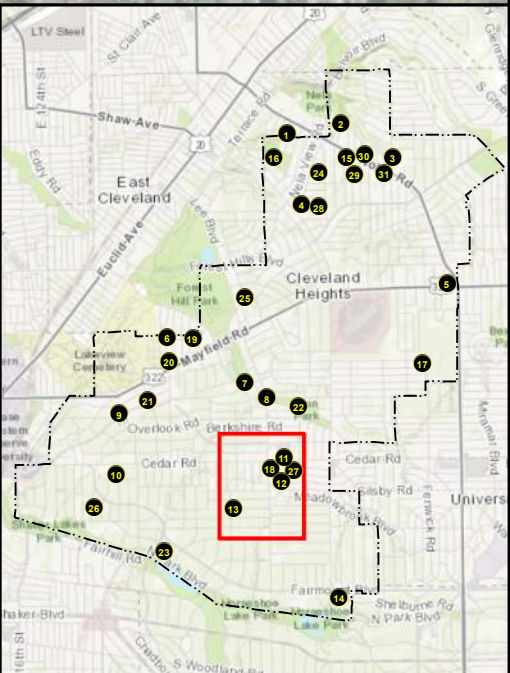
Map Sheet 9

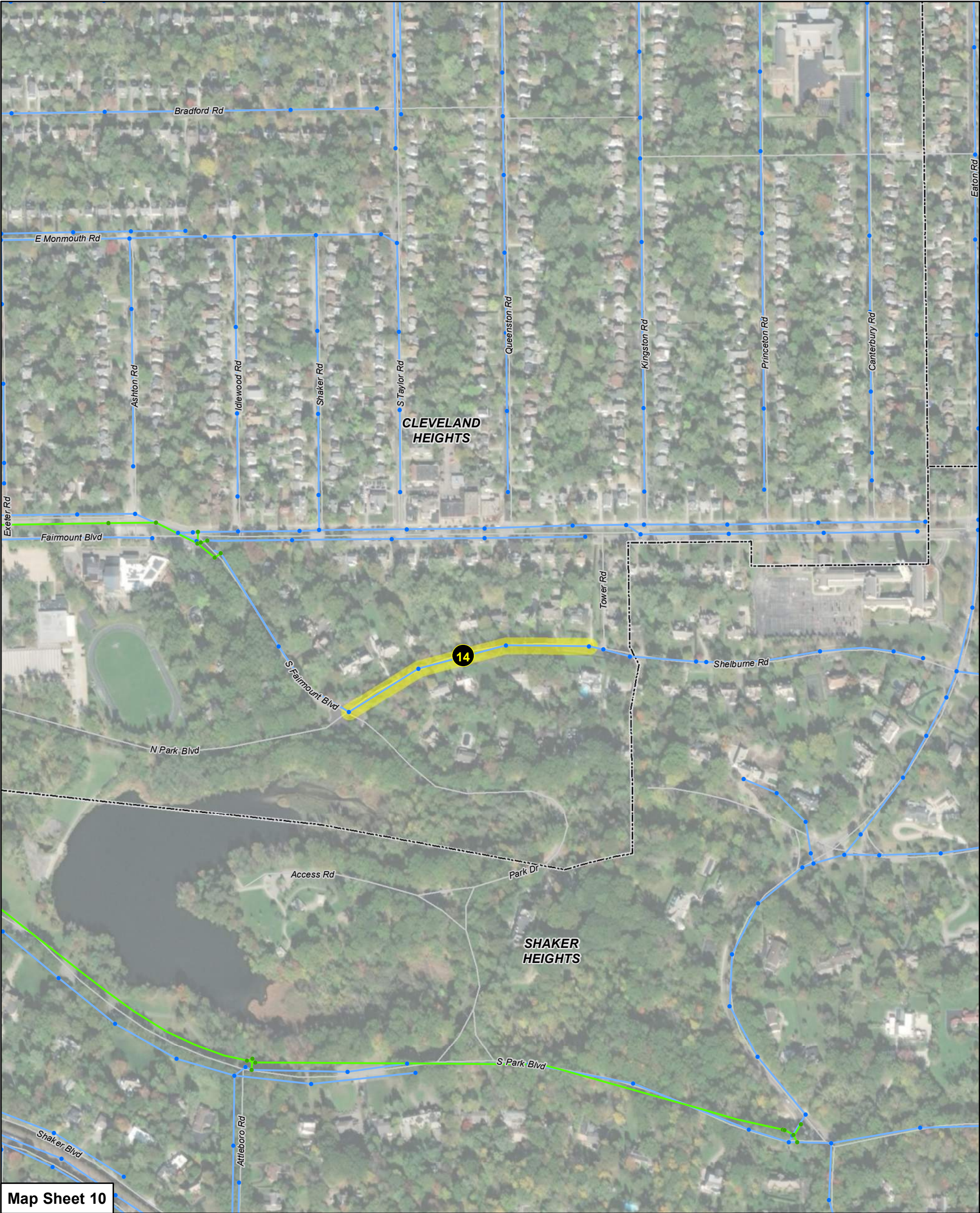
Legend

- Community Border
- District_Manhole
- Local_Manhole
- District Pump Station
- Local Pump Station
- HFC Locations



Map Key	High Frequency Cleaning Locations	Length (LF)	Identified From	Cause
1	Eloise in north section	450	From CMOM March 2016	Residential Grease
2	Randolph intersecting Woodview	200	From CMOM March 2016	Pump Station
3	Quilliams (from Noble to Lowell)	850	From CMOM March 2016	Residential Grease
4	Sylvanhurst at Henderson	460	From CMOM March 2016	Residential Grease
5	Mayfield (south side) from Noble to Warrensville Center	510	From CMOM March 2016	Commercial Grease
6	Coventry at Avondale	200	From CMOM March 2016	Residential Grease
7	Superior and Euclid Heights Blvd	200	From CMOM March 2016	Residential Grease
8	Superior and Lee	200	From CMOM March 2016	Residential Grease
9	Euclid Heights at Edgehill	600	From CMOM March 2016	Residential Grease
10	Nottingham Lane	1,400	From CMOM March 2016	Residential Grease
11	Kildare (lower)	200	From CMOM March 2016	Residential Grease
12	Tullamore	200	From CMOM March 2016	Residential Grease
13	Coleridge - Stratford - Corydon	1,200	From CMOM March 2016	Roots
14	North Park Lane (Shelburne to City Line)	900	From CMOM March 2016	Residential Grease and Roots
15	943 Elbon to Noble	400	2007 Sewer Cleaning Report	Residential Grease
16	Dresdon Road	1000		Residential Grease
17	Shannon at Maple	750	2007 Sewer Cleaning Report	Residential Grease
18	2195 Lee Road	330	2007 Sewer Cleaning Report	Commercial Grease
19	Eddington Road	730	2007 Sewer Cleaning Report	Residential Grease
20	1714 Coventry Road	540	2008 Sewer Cleaning Report	Residential Grease
21	2684 Euclid Heights Blvd	570	2009 Sewer Cleaning Report	Residential Grease
22	Superior between Redwood and Goodnor	250	2009 Sewer Cleaning Report	Residential Grease
23	North Park btw Coventry and Arlington	2,800		Roots
24	3390 Winsford Road	250	Cleaning Reports	Residential Grease
25	Bolton Road & Monticello Blvd	220	Cleaning Reports	Residential Grease
26	2520 - 2334 Ardleigh Drive	460	Cleaning Reports	Residential Grease
27	3244 Cedarbrook Road	200	Cleaning Reports	Residential Grease
28	Henderson Road	1,000	Identified during HHI LSSES	Residential Grease
29	Pembroke Road	1,700	Identified during HHI LSSES	Roots
30	Noble Rd btw Pembroke and Yellowstone	630	Cleveland Heights Phase I SSES	Residential Grease
31	Pennfield Rd at Noble	200	Cleveland Heights Phase I SSES	Residential Grease





Map Sheet 10

Legend

- Community Border
- District_Manhole
- Local_Manhole
- District Pump Station
- Local Pump Station
- HFC Locations



Map Key	High Frequency Cleaning Locations	Length (LF)	Identified From	Cause
1	Eloise in north section	450	From CMOM March 2016	Residential Grease
2	Randolph intersecting Woodview	200	From CMOM March 2016	Pump Station
3	Quilliams (from Noble to Lowell)	850	From CMOM March 2016	Residential Grease
4	Sylvanhurst at Henderson	460	From CMOM March 2016	Residential Grease
5	Mayfield (south side) from Noble to Warrensville Center	510	From CMOM March 2016	Commercial Grease
6	Coventry at Avondale	200	From CMOM March 2016	Residential Grease
7	Superior and Euclid Heights Blvd	200	From CMOM March 2016	Residential Grease
8	Superior and Lee	200	From CMOM March 2016	Residential Grease
9	Euclid Heights at Edgehill	600	From CMOM March 2016	Residential Grease
10	Nottingham Lane	1,400	From CMOM March 2016	Residential Grease
11	Kildare (lower)	200	From CMOM March 2016	Residential Grease
12	Tullamore	200	From CMOM March 2016	Residential Grease
13	Coleridge - Stratford - Corydon	1,200	From CMOM March 2016	Roots
14	North Park Lane (Shelburne to City Line)	900	From CMOM March 2016	Residential Grease and Roots
15	943 Elbon to Noble	400	2007 Sewer Cleaning Report	Residential Grease
16	Dresdon Road	1000		Residential Grease
17	Shannon at Maple	750	2007 Sewer Cleaning Report	Residential Grease
18	2195 Lee Road	330	2007 Sewer Cleaning Report	Commercial Grease
19	Eddington Road	730	2007 Sewer Cleaning Report	Residential Grease
20	1714 Coventry Road	540	2008 Sewer Cleaning Report	Residential Grease
21	2684 Euclid Heights Blvd	570	2009 Sewer Cleaning Report	Residential Grease
22	Superior between Redwood and Goodnor	250	2009 Sewer Cleaning Report	Residential Grease
23	North Park btw Coventry and Arlington	2,800		Roots
24	3390 Winsford Road	250	Cleaning Reports	Residential Grease
25	Bolton Road & Monticello Blvd	220	Cleaning Reports	Residential Grease
26	2520 - 2334 Ardleigh Drive	460	Cleaning Reports	Residential Grease
27	3244 Cedarbrook Road	200	Cleaning Reports	Residential Grease
28	Henderson Road	1,000	Identified during HHI LSSES	Roots
29	Pembroke Road	1,700	Identified during HHI LSSES	Roots
30	Noble Rd btw Pembroke and Yellowstone	630	Cleveland Heights Phase I SSSES	Residential Grease
31	Pennfield Rd at Noble	200	Cleveland Heights Phase I SSSES	Residential Grease

