



Landmark Certificate of Appropriateness Info Sheet

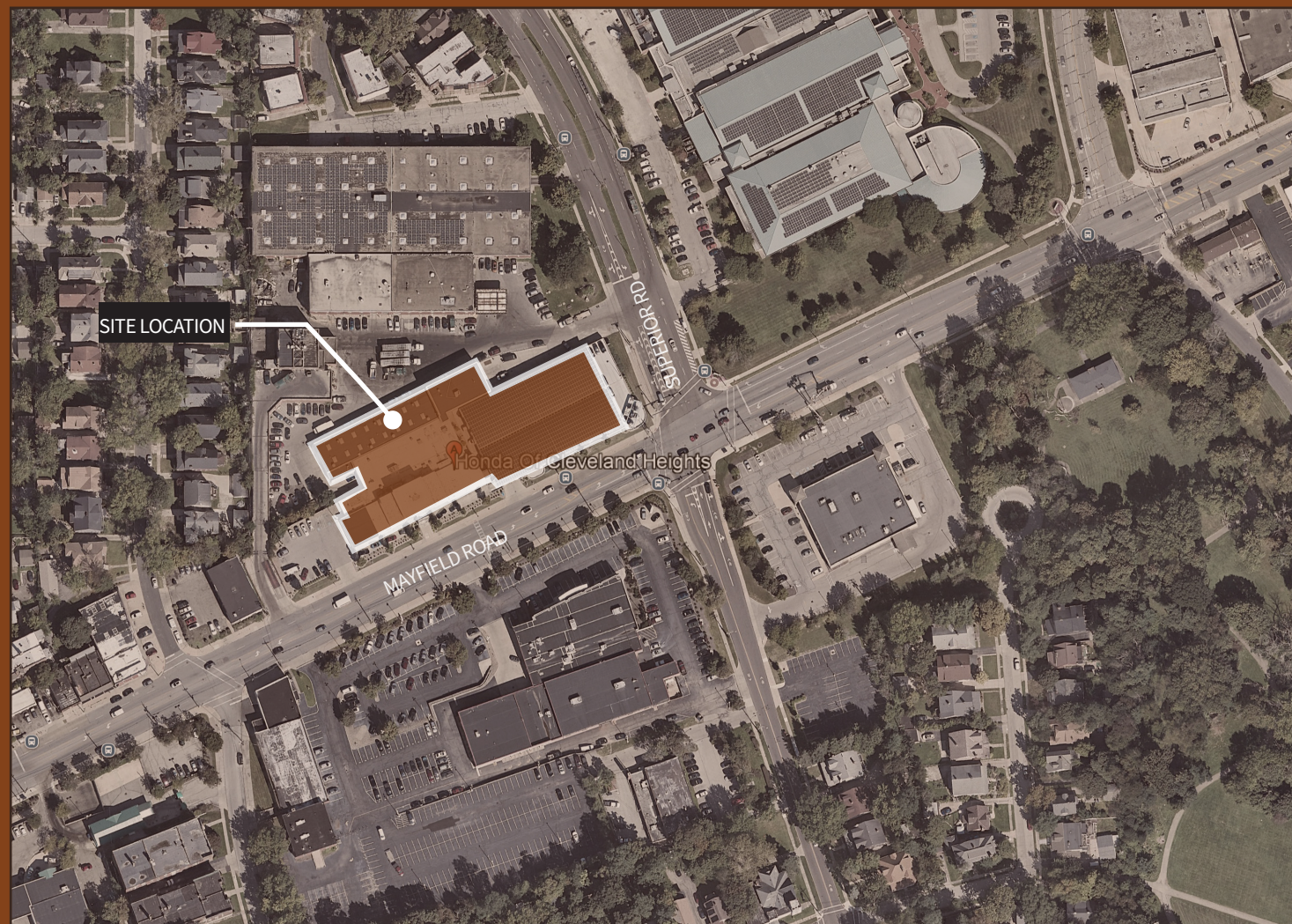
Printed Date: October 17, 2025

Property Address:

2953 MAYFIELD RD CLEVELAND HEIGHTS, OH 44118

Detailed Project Description

The project involves comprehensive exterior modifications to bring the facility in line with updated Honda dealership standards. Key improvements include the installation of new exterior canopies that compliment the existing architecture while meeting brand design requirements. Additionally, updated signage will be proposed to reflect the latest branding guidelines.



HONDA OF CLEVELAND HEIGHTS

EXTERIOR RENOVATION: ABR

2953 Mayfield Rd, Cleveland Heights, OH 44118



PROJECT DESCRIPTION

The property located at 2953 Mayfield Road in Cleveland Heights currently operates as a Honda dealership and service center. The existing building incorporates the historic City Hall façade, which will remain preserved and untouched as part of this project.

The project involves comprehensive exterior modifications to bring the facility in line with updated Honda dealership standards. Key improvements include the installation of new exterior canopies that compliment the existing architecture while meeting brand design requirements. Additionally, updated signage will be proposed to reflect the latest branding guidelines.



VIEW FROM MAYFIELD ROAD



VIEW FROM MAYFIELD ROAD



EXISTING HISTORICAL FACADE



VIEW FROM SUPERIOR RD

EXISTING PHOTOS

SHARP AUTO SERVICE ADJACENT TO THE EAST



INTERSECTION ADJACENT TO WEST OF PROPERTY



ADJACENT BUILDINGS



GEN 4 .HONDA DEALERSHIP DESIGN REQUIRMENTS

As part of Honda dealership requirements, building owners are expected to ensure their facilities comply with current Honda design and branding standards. These standards include

- Honda blue acm panels
- Columns wrapped in honda grey fiber cement panel or eifs product of similar finish
- Honda signage
- Local dealership signage
- Cantilevered steel trellis / canopy



Interstate Honda: Chehalis, WA



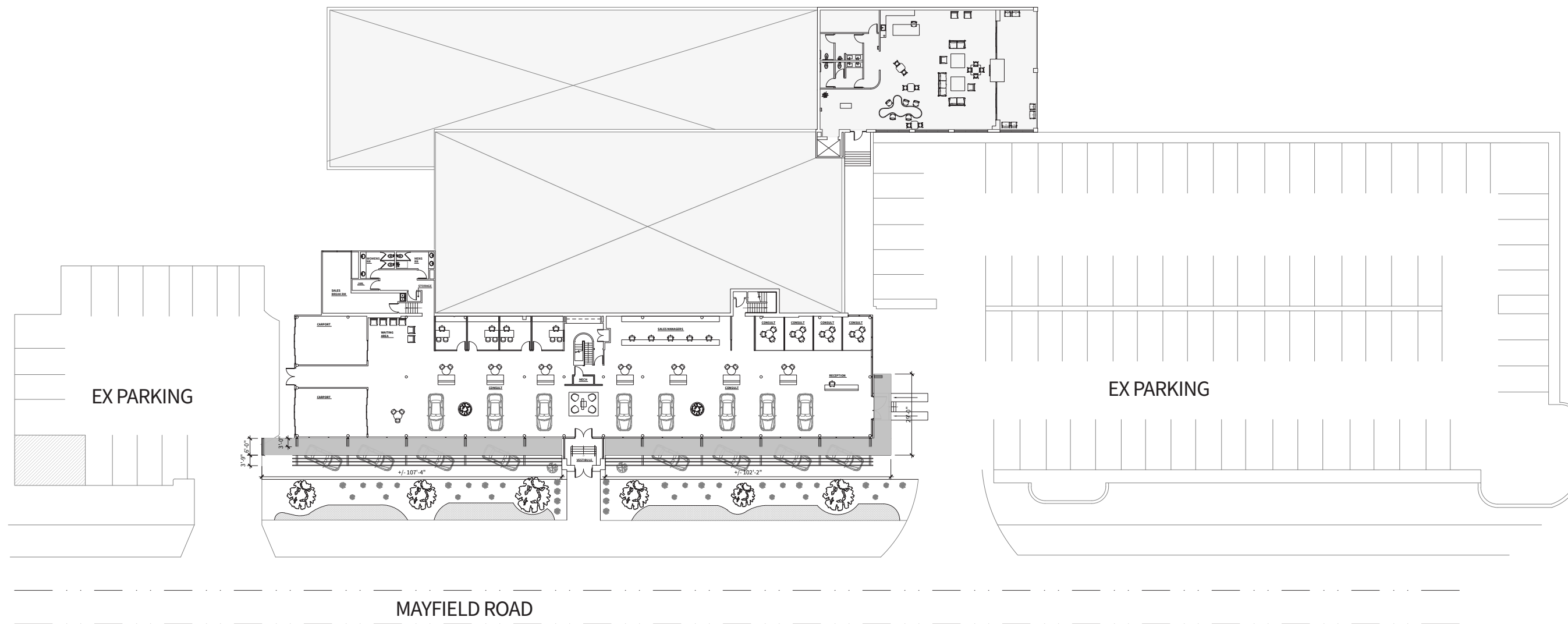
Interstate Honda: Chehalis, WA

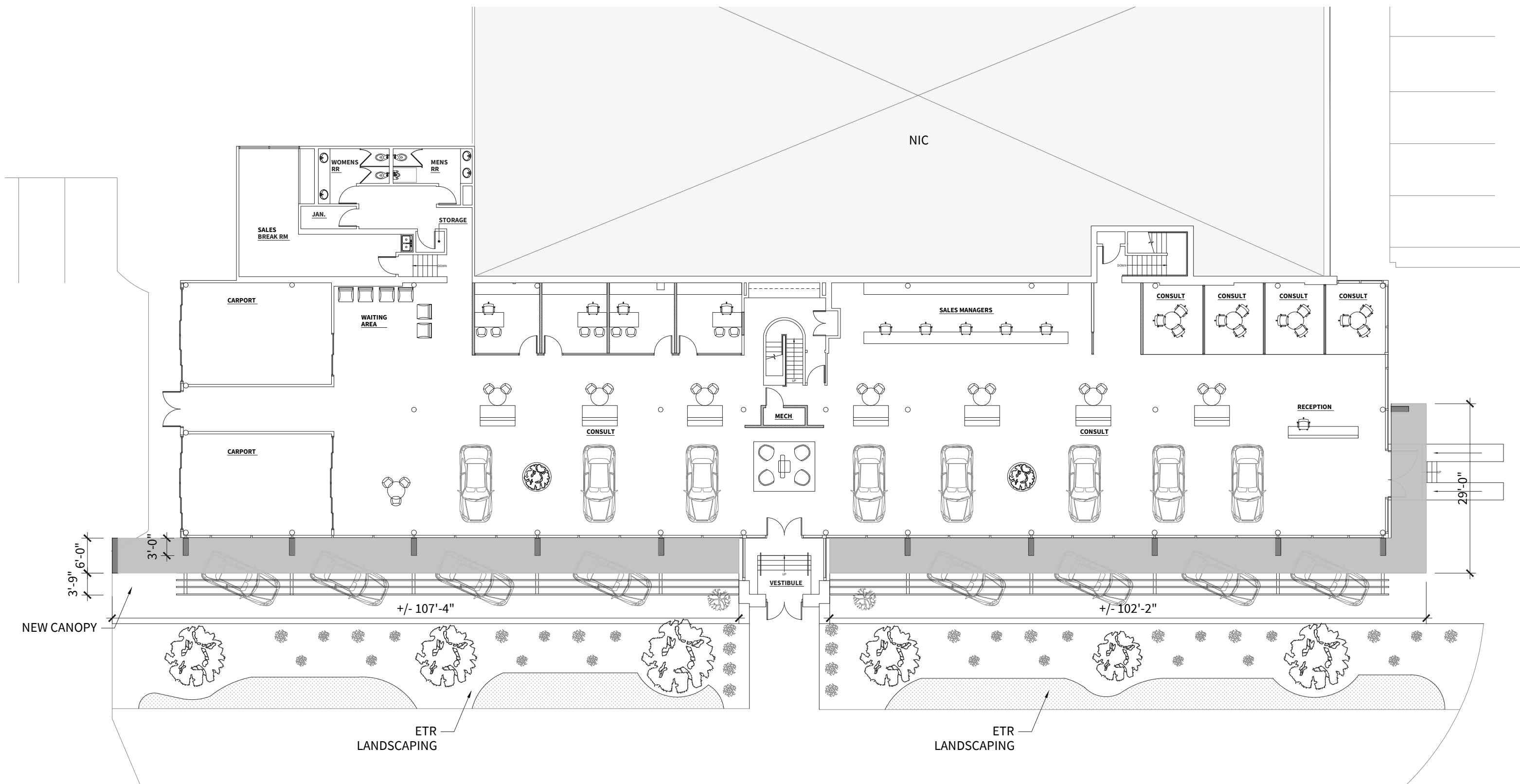


Honda Marysville, OH

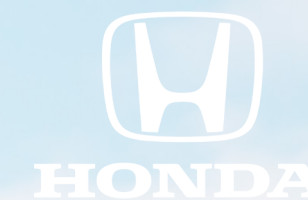


Honda Marysville, OH

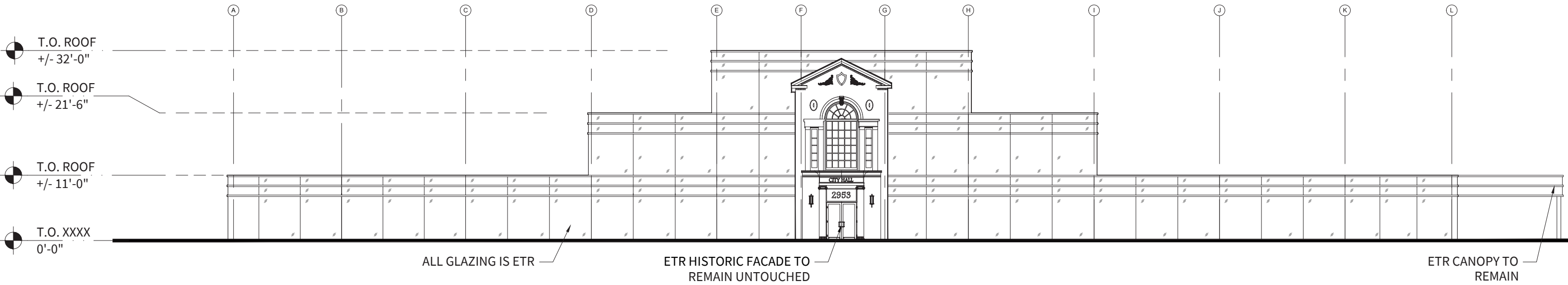








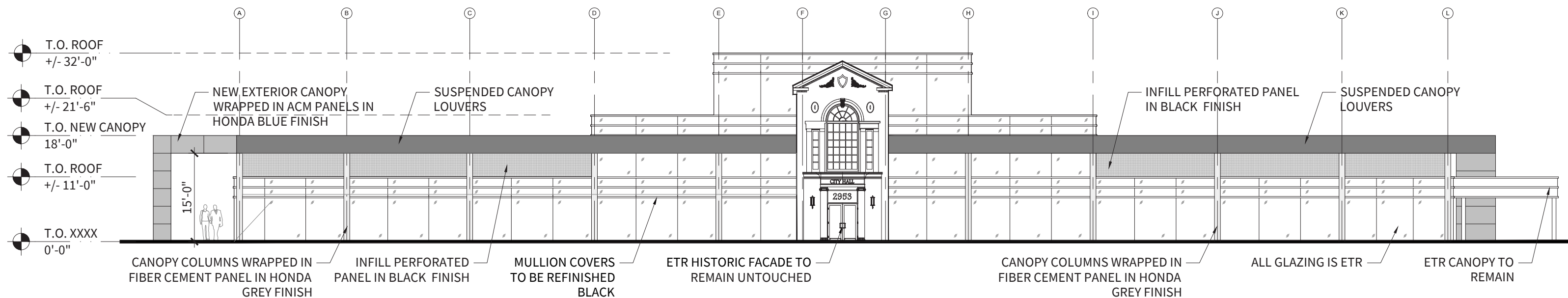




EXISTING NORTH ELEVATION

SCALE: 1/16"=1'-0"





PROPOSED NORTH ELEVATION

SCALE: 1/16"=1'-0"