



# 2026

Cleveland Heights Department of Public Works  
Refuse and Recycling  
Calendar





# The Department of Public Works

## What We Do:

The Department of Public Works is responsible for the cleaning, repair, maintenance, and inspection of Cleveland Heights including:

- City Streets
- Drains, Culverts, and Watercourses
- Ice and Snow Removal
- Sanitary and Storm Sewers

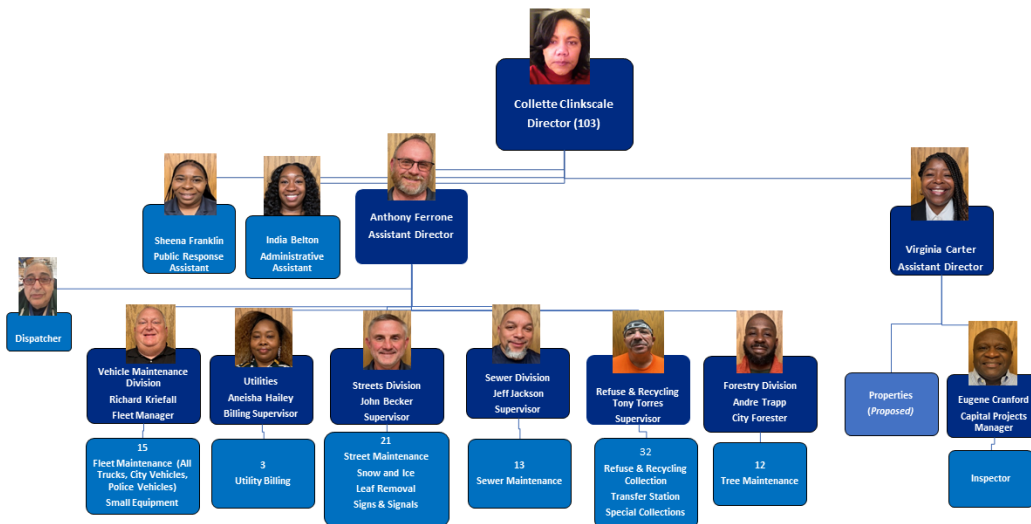
It is also responsible for the collection and disposal of:

- Recyclables
- Solid Waste

## How We Are Organized:

The Department of Public Works comprises the following divisions:

- **Capital Projects:** Capital Projects is responsible for managing the city's major construction and capital improvement projects.
- **Forestry:** Forestry is responsible for the planting and care of trees located on public parkways, medians, parks, and public properties throughout Cleveland Heights.
- **Refuse / Recycling:** Refuse / Recycling provides curbside collection of solid waste, recycling materials, and yard waste for approximately 15,500 homes, schools, religious institutions, daycare centers, condominiums, and 211 apartment buildings each week.
- **Sewer Utility:** The Sewer Utility department is responsible for the maintenance of both storm and sanitary sewer systems in the public right-of-way in Cleveland Heights.
- **Street Maintenance:** The Street Maintenance division is responsible for providing a healthy, clean, and aesthetically acceptable environment through maintaining, cleaning, and clearing Cleveland Heights streets, which includes street repair, leaf collection, and snow removal.



**Physical Address:**  
14200 Superior Road  
Cleveland Heights,  
OH 44118

216-691-7300

**Mailing Address:**  
40 Severance Circle  
Cleveland Heights,  
OH 44118

Check Our Page!





# Bulk Item Collection Process

## Bulk Collection Guidelines

Items that are too large to fit in the refuse cart and cannot easily be broken down are considered bulk items. Cleveland Heights collects bulk items once each month from every neighborhood, which have been broken into four pickup areas.

- The city accepts couches, chairs, mattresses, box springs, washing machines, dressers, dining tables and chairs, toilets, televisions, refrigerators, and carpets.
- Residents may place up to four bulk items at a time.
- All soft furniture, mattresses, and box springs **need to be wrapped in plastic before being set out for pickup.**
- Remove all doors from refrigerators.
- Cut and roll carpet pieces into rolls that are no more than one foot high and three feet long.
- Place all bulk items at least three feet from your refuse and recycling carts and away from all overhead obstructions.
- Do not include bags of trash with bulk items. The Department of Public Works will not pick them up.
- The city does not accept bulk collections from large move-outs or clean-outs and does not accept building or construction debris.

Bulk items should be placed on the curb between 7pm on Sunday to 7am on the Monday of your collection week.

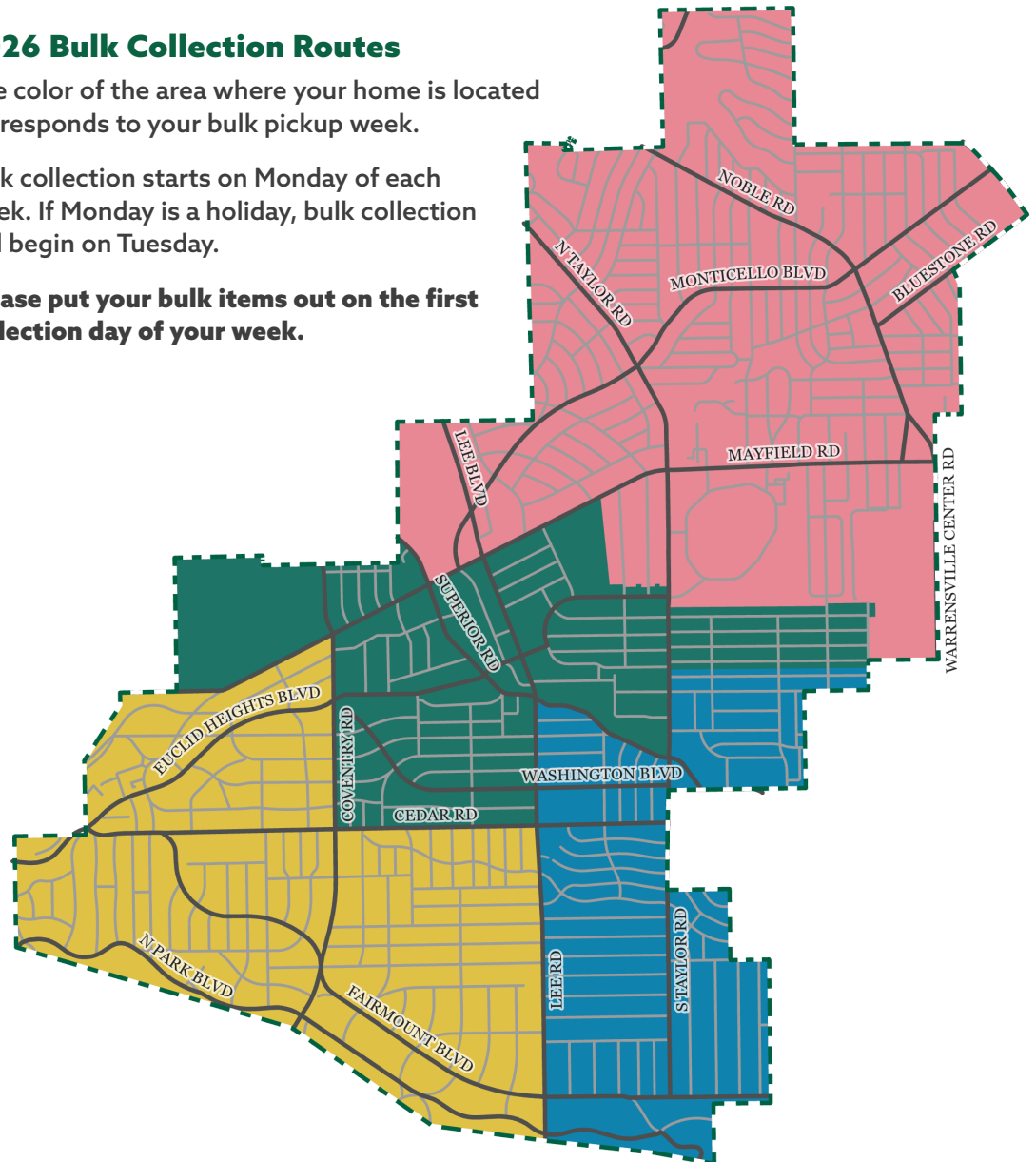
Bulk Collection Week
1 <sup>st</sup> full week of the month
2 <sup>nd</sup> full week of the month
3 <sup>rd</sup> full week of the month
4 <sup>th</sup> full week of the month

## 2026 Bulk Collection Routes

The color of the area where your home is located corresponds to your bulk pickup week.

Bulk collection starts on Monday of each week. If Monday is a holiday, bulk collection will begin on Tuesday.

**Please put your bulk items out on the first collection day of your week.**







**\*Christmas lights at a recycling center.**



**\*Proper Christmas Tree disposal.**

# Holiday Light Recycling

Holiday lights add warmth and coziness to our homes and businesses during the darker months, but their carbon footprint isn't so quaint. Instead of tossing broken strings into your garbage bin, you may drop them off at the Department of Public Works Service Garage (14200 Superior Road), or at one of many regional holiday light recycling drives.

Or, the Cleveland Heights Green Team, in partnership with the Heights Libraries and the Shaker Lakes Nature Center, will collect holiday lights to recycle through January 31, 2026. Drop-off locations include the Lee Road Library main entrance and the Nature Center lobby. Proceeds from this program go directly to the Cleveland Metroparks Zoo's Lights for Lions program.

Recycling lights diverts waste from landfills, conserving resources like copper and plastic, and preventing toxic materials such as mercury and lead from leaching into the soil and water.

The Public Works Department also offers residents an easy and environmentally sensitive way of disposing of their live/cut trees. Just place your tree with the trunk facing the road on the tree lawn for collection during the month of January. **DO NOT PLACE THEM IN YOUR CURBSIDE RECYCLING CART.**

**To protect our Public Works employees, please make sure your tree is free of the following items:**

- Bags
- Decorations/Lights
- Nails
- Stands
- Tinsel
- Wire



01

2026

January

December							February						
su	mo	tu	we	th	fr	sa	su	mo	tu	we	th	fr	sa
	1	2	3	4	5	6	1	2	3	4	5	6	7
7	8	9	10	11	12	13	8	9	10	11	12	13	14
14	15	16	17	18	19	20	15	16	17	18	19	20	21
21	22	23	24	25	26	27	22	23	24	25	26	27	28
28	29	30	31										

sunday	monday	tuesday	wednesday	thursday	friday	saturday
28	29	30	31	New Year's Day 1	2	3
4	5	6	7	8	9	10
	Place Bulk Items on Tree Lawn					
11	12	13	14	15	16	17
	Place Bulk Items on Tree Lawn					
18	Martin Luther King Jr. Day 19	20	21	22	23	24
	NO COLLECTION	Monday Collection Place Bulk Items on Tree Lawn	Tuesday Collection	Wednesday Collection	Thursday Collection	Friday Collection
25	26	27	28	29	30	31
	Place Bulk Items on Tree Lawn					

	Regular Collection Day	Bulk Collection Week
	A. Monday	1 <sup>st</sup> full week of the month
	B. Tuesday	2 <sup>nd</sup> full week of the month
	C. Wednesday	3 <sup>rd</sup> full week of the month
	D. Thursday or Friday	4 <sup>th</sup> full week of the month



# Snow Plowing Procedures


During heavy snowfall, plow trucks first address main streets and hills and may need to focus entirely on plowing main streets until precipitation subsides.

Once main streets and hills are passable, trucks then focus on side streets.

Cleveland Heights applies a de-icing agent on main streets, school zones, hills, and intersections. We do not salt side streets because of the corrosive effect the salt has on asphalt, and because we must prioritize keeping our highly trafficked roads clear.

In 2026, Public Works will begin using a brine solution (liquid salt) for pre-treating roads before a storm. Brine helps prevent snow and ice from bonding to pavement, requiring less salt overall to keep roads clear. Rock salt is typically applied after snow fall and requires more product to be effective. All of this salt degrades our roads and seeps into our storm sewers. It takes a lot of time to clear all of our roads, and we appreciate your patience.

**Please stay at least 50 feet behind the plow trucks while driving.**



**\*Snow being removed from city streets.**



02

2026

February

January							March						
su	mo	tu	we	th	fr	sa	su	mo	tu	we	th	fr	sa
	1	2	3	1	2	3	1	2	3	4	5	6	7
4	5	6	7	8	9	10	8	9	10	11	12	13	14
11	12	13	14	15	16	17	15	16	17	18	19	20	21
18	19	20	21	22	23	24	22	23	24	25	26	27	28
25	26	27	28	29	30	31	29	30	31				

sunday	monday	tuesday	wednesday	thursday	friday	saturday
1	2	3	4	5	6	7
	Place Bulk Items on Tree Lawn					
8	9	10	11	12	13	Valentine's Day 14
	Place Bulk Items on Tree Lawn					
15	President's Day 16	Ramadan Begins 17	18	19	20	21
	NO COLLECTION	Monday Collection Place Bulk Items on Tree Lawn	Tuesday Collection	Wednesday Collection	Thursday Collection	Friday Collection
22	23	24	25	26	27	28
	Place Bulk Items on Tree Lawn					
1	2	3	4	5	6	7

Black History Month	Regular Collection Day	Bulk Collection Week
	A. Monday	1 <sup>st</sup> full week of the month
	B. Tuesday	2 <sup>nd</sup> full week of the month
	C. Wednesday	3 <sup>rd</sup> full week of the month
	D. Thursday or Friday	4 <sup>th</sup> full week of the month



# Division of Sewer Utility


The Sewer Utility Department is responsible for the maintenance of both storm and sanitary sewer systems in the right-of-way in Cleveland Heights. Have a sewer question? Call **216-691-7306**. To report a sewer problem, please contact the MAC at **216-291-2323**, or [mac@clevelandheights.gov](mailto:mac@clevelandheights.gov).

The Cleveland Water Department is responsible for water issues, such as broken water mains, low water pressure, and water quality. For more information visit [clevelandwater.com](http://clevelandwater.com)

For billing issues, call **216-664-3130**.

For the emergency line (breaks and leaks), call **216-664-3060**.

For the automated phone payment system, call **216-446-6834**.



\*City sewers being cleaned.



03

2026

March

February							April						
su	mo	tu	we	th	fr	sa	su	mo	tu	we	th	fr	sa
1	2	3	4	5	6	7				1	2	3	4
8	9	10	11	12	13	14	5	6	7	8	9	10	11
15	16	17	18	19	20	21	12	13	14	15	16	17	18
22	23	24	25	26	27	28	19	20	21	22	23	24	25
							26	27	28	29	30		

sunday	monday	tuesday	wednesday	thursday	friday	saturday
1	2	3	4	5	6	7
	Place Bulk Items on Tree Lawn					
Daylight Saving Time Begins 8	9	10	11	12	13	14
	Place Bulk Items on Tree Lawn					
15	16	St. Patrick's Day 17	18	19	20	21
	Place Bulk Items on Tree Lawn					
22	Spring Break Begins for CH-UH School District 23	24	25	26	27	28
	Place Bulk Items on Tree Lawn					
29	30	31	1	2	3	4

Women's History Month	Regular Collection Day	Bulk Collection Week
	A. Monday	1 <sup>st</sup> full week of the month
	B. Tuesday	2 <sup>nd</sup> full week of the month
	C. Wednesday	3 <sup>rd</sup> full week of the month
	D. Thursday or Friday	4 <sup>th</sup> full week of the month



Sign up for FREE!

# RUST BELT



# RIDERS

Don't trash food...  
**compost it!**

Questions? Site Issues?  
info@rustbeltriders.com

## Food Scrap Composting Drop-Off Site



## NEW Composting Pilot

**\*Resident making use of the composting program.**

The City of Cleveland Heights, in partnership with Rust Belt Riders, offers a free, municipal drop-off composting program for all residents. Participants can drop off accepted compostable waste, including all food scraps, at bins at Dave's Supermarket at Severance Town Center, 3628 Mayfield Road.

### How it Works:

- Sign up for free by scanning or visiting [accounts.rustbeltriders.com/forms/city-of-cleveland-heights-composting-signup-form/](https://accounts.rustbeltriders.com/forms/city-of-cleveland-heights-composting-signup-form/)
- You will receive a welcome email with your code and details about the program, including what's accepted.
- Collect food scraps and other compostable waste at home and bring it to the city's drop-off bins located at **Dave's Supermarket**.
- Unlock the bin with your unique code received during registration and deposit your food waste in the bin, then relock the bin.



### What is Compostable?

If it's food, it can be composted through this program. This includes meat, seafood, and dairy (bones and shells, too). Paper items soiled with food and BPI-certified plates and cutlery are also accepted. Visit [rustbeltriders.com/whatcanicompost](https://rustbeltriders.com/whatcanicompost) for a detailed list.



042026

April

March							May						
su	mo	tu	we	th	fr	sa	su	mo	tu	we	th	fr	sa
1	2	3	4	5	6	7						1	2
8	9	10	11	12	13	14	3	4	5	6	7	8	9
15	16	17	18	19	20	21	10	11	12	13	14	15	16
22	23	24	25	26	27	28	17	18	19	20	21	22	23
29	30	31					24	25	26	27	28	29	30
							31						

sunday	monday	tuesday	wednesday	thursday	friday	saturday
29	30	31	Passover Begins Loose Leaf Collection Begins1	2	Good Friday3	4
Easter5	6 Place Bulk Items on Tree Lawn	7	8	9	10	11
12	13 Place Bulk Items on Tree Lawn	14	15	16	17	Shredding Day18
19	20 Place Bulk Items on Tree Lawn	21	Earth Day22	23	Arbor Day24	25
26	27 Place Bulk Items on Tree Lawn	28	29	Loose Leaf Collection Ends30	1	2

Notes: Shredding Day has a 10 box maximum.

Regular Collection Day

Bulk Collection Week

A. Monday1<sup>st</sup> full week of the month

B. Tuesday2<sup>nd</sup> full week of the month

C. Wednesday3<sup>rd</sup> full week of the month

D. Thursday or Friday4<sup>th</sup> full week of the month





**\*City vehicle under maintenance.**



**\*Collection of city refuse / recycling.**



**\*The Division of Streets repairing a road.**



**\*City salt truck.**

# National Public Works Week

National Public Works Week, a program of the American Public Works Association (APWA), "gives all of us an opportunity to celebrate, support, and amplify the contributions made by public works in communities around the world." ([apwa.org](http://apwa.org))

We don't always notice the immense efforts of Public Works because, when everything is going smoothly, we don't have to think about it: our garbage and recycling are picked up, our streets are clear, our sewers are functional, our trees are healthy, and our City vehicles are zigzagging across town. It takes an army of coordinated, motivated, and skilled staff to make all of these things happen. All year round—and this month in particular—we say a hearty "Thank you!" to our Public Works team.

In 2026, National Public Works Week will take place May 17-23. Help us celebrate by sharing something you appreciate about the Public Works Department and its various divisions. The MAC is a great place to leave a voicemail, email, web portal, or App comment.



05

2026

May

April							June						
su	mo	tu	we	th	fr	sa	su	mo	tu	we	th	fr	sa
			1	2	3	4		1	2	3	4	5	6
5	6	7	8	9	10	11	7	8	9	10	11	12	13
12	13	14	15	16	17	18	14	15	16	17	18	19	20
19	20	21	22	23	24	25	21	22	23	24	25	26	27
26	27	28	29	30			28	29	30				

sunday	monday	tuesday	wednesday	thursday	friday	saturday
26	27	28	29	30	Bagged Yard Waste Collection Begins 1	2
3	4 Place Bulk Items on Tree Lawn	5	6	7	8	9
Mother's Day 10	11 Place Bulk Items on Tree Lawn	12	13	14	15	16
17	National Public Works Week 18 Place Bulk Items on Tree Lawn	19	20	21	22	23
24	Memorial Day 25 NO COLLECTION	26 Monday Collection Place Bulk Items on Tree Lawn	27 Tuesday Collection	28 Wednesday Collection	29 Thursday Collection	30 Friday Collection
31	Mental Health Awareness Month				Regular Collection Day	Bulk Collection Week
					A. Monday	1 <sup>st</sup> full week of the month
					B. Tuesday	2 <sup>nd</sup> full week of the month
					C. Wednesday	3 <sup>rd</sup> full week of the month
					D. Thursday or Friday	4 <sup>th</sup> full week of the month





# Fire Hydrant Flushing

**\*Fire hydrant being flushed for maintenance.**

Once per year (weekdays only), the Cleveland Heights Fire Division flushes fire hydrants throughout the city, a maintenance process that cleans water mains by opening hydrants to create a high-velocity flow, removing sediment, minerals, and debris. The process improves water quality and ensures fire hydrants are operational.

As a consequence of the flushing, a great deal of sediment is raised. Check the cold-water flow first to make sure it runs clear during this period. If the water is not clear, turn it off and let the sediment settle.



06

2026

June

May							July						
su	mo	tu	we	th	fr	sa	su	mo	tu	we	th	fr	sa
					1	2				1	2	3	4
3	4	5	6	7	8	9	5	6	7	8	9	10	11
10	11	12	13	14	15	16	12	13	14	15	16	17	18
17	18	19	20	21	22	23	19	20	21	22	23	24	25
24	25	26	27	28	29	30	26	27	28	29	30	31	
31													

sunday	monday	tuesday	wednesday	thursday	friday	saturday
31	1	2	3	4	5	6
	Place Bulk Items on Tree Lawn					
7	8	9	10	11	12	13
	Place Bulk Items on Tree Lawn					
14	15	16	17	18	Juneteenth 19	20
	Place Bulk Items on Tree Lawn				NO COLLECTION	Friday Collection
Father's Day 21	22	23	24	25	26	27
	Place Bulk Items on Tree Lawn					
28	29	30	1	2	3	4

Pride Month	Regular Collection Day	Bulk Collection Week
	A. Monday	1 <sup>st</sup> full week of the month
	B. Tuesday	2 <sup>nd</sup> full week of the month
	C. Wednesday	3 <sup>rd</sup> full week of the month
	D. Thursday or Friday	4 <sup>th</sup> full week of the month





**\*Cleveland Heights block party circa 1960's.**

**\*Somerton block party.**

# City Block Parties

Block parties are a long-standing tradition in Cleveland Heights. Any given weekend during the summer months, you will find neighbors getting together mid-street to have a good time.

The City will provide barricades to keep your street free from traffic during party hours. To reserve street barricades, email the Mayor's Action Center at [mac@clevelandheights.gov](mailto:mac@clevelandheights.gov), complete the Block Party Request Form on the City's website, or call **216-291-2323** at least two weeks before the party. You will need to provide:

- The date and time of the block party.
- The intersections to be barricaded.
- The street to be blocked.
- The name, address and phone number of the person to receive the barricades.

The barricades will be delivered to the contact person's tree lawn on the last workday before the block party.

## Make the Day Fun

Ideas for a fun party include relay races or a water balloon toss, a bicycle parade, white elephant sale, pet show, baking contest, or a talent show.

To request a Fire Truck please contact the Cleveland Heights Fire Department at [clevelandheights.gov/fire](http://clevelandheights.gov/fire), or for a Police Officer/K9 Unit please contact the Chief's Office at **216-291-4974**.

07

2026

July

June							August						
su	mo	tu	we	th	fr	sa	su	mo	tu	we	th	fr	sa
	1	2	3	4	5	6							1
7	8	9	10	11	12	13	2	3	4	5	6	7	8
14	15	16	17	18	19	20	9	10	11	12	13	14	15
21	22	23	24	25	26	27	16	17	18	19	20	21	22
28	29	30					23	24	25	26	27	28	29
							30	31					

sunday	monday	tuesday	wednesday	thursday	friday	saturday
28	29	30	1	2	City Hall Closed 3	Independence Day 4
5	6	7	8	9	Cain Park Arts Festival 10	Cain Park Arts Festival 11
	Place Bulk Items on Tree Lawn					
Cain Park Arts Festival 12	13	14	15	16	17	18
	Place Bulk Items on Tree Lawn					
19	20	21	22	23	24	25
	Place Bulk Items on Tree Lawn					
26	27	28	29	30	31	1
	Place Bulk Items on Tree Lawn					

Disability Pride Month	Regular Collection Day	Bulk Collection Week
	A. Monday	1 <sup>st</sup> full week of the month
	B. Tuesday	2 <sup>nd</sup> full week of the month
	C. Wednesday	3 <sup>rd</sup> full week of the month
	D. Thursday or Friday	4 <sup>th</sup> full week of the month





# Protecting Waterways

Everything that enters our storm drains—grass clippings, yard waste, soap, pesticides, fertilizer, automotive fluids, pet waste, and rock salt—travels to our streams, rivers, and Lake Erie.

**Storm drains are NOT waste receptacles.**

- Keep lawn debris like grass and tree clippings out of the street and away from storm drains.
- Use rock salt sparingly during the snowy months.
- Do not pour or dump waste into streets, on driveways, or in parking lots—they will be washed into storm drains during the next rainfall.
- Never dump anything directly into a storm drain.
- Do not rake leaves in the fall and spring into the street.
- Dispose of household cleaners properly.

08

2026

August

July							September						
su	mo	tu	we	th	fr	sa	su	mo	tu	we	th	fr	sa
			1	2	3	4			1	2	3	4	5
5	6	7	8	9	10	11	6	7	8	9	10	11	12
12	13	14	15	16	17	18	13	14	15	16	17	18	19
19	20	21	22	23	24	25	20	21	22	23	24	25	26
26	27	28	29	30	31		27	28	29	30			

sunday	monday	tuesday	wednesday	thursday	friday	saturday		
25	26	27	28	29	30	1		
2	3	4	5	6	7	8		
	Place Bulk Items on Tree Lawn							
9	10	11	12	13	14	15		
	Place Bulk Items on Tree Lawn							
16	17	18	19	20	21	22		
	Place Bulk Items on Tree Lawn							
23	24	25	26	27	28	29		
	Place Bulk Items on Tree Lawn							
30	31				Regular Collection Day		Bulk Collection Week	
					A. Monday		1 <sup>st</sup> full week of the month	
					B. Tuesday		2 <sup>nd</sup> full week of the month	
					C. Wednesday		3 <sup>rd</sup> full week of the month	



# Planting Tips for the Fall


Fall is an ideal time to plant trees and shrubs because the cool air and warm soil encourage root growth before winter, leading to a stronger plant next year. The best planting window is about six weeks before the first hard frost, typically between September and November, with continued planting possible into early November as long as the ground isn't frozen and soil temperatures are above 50 degrees Fahrenheit.

## **Handy planting tips from our Forestry Supervisor, Andre Trapp:**

**Planting:** Dig the hole about twice the width of the root ball and no deeper than necessary. Andre recommends two inches above grade.

**Mulching:** Andre's special fill recipe contains about 80% native soil and 20% stump-grinding chips, adding microorganisms that stimulate root growth. He then recommends using mulch to form a berm around the tree, creating a well in the middle that captures water and forms a buffer between the tree's planting radius and landscaping equipment.

**Watering:** Water well after planting and continue to water regularly until the ground freezes.



\*Public Works planting a tree for Arbor Day.



09

2026

September

August							October						
su	mo	tu	we	th	fr	sa	su	mo	tu	we	th	fr	sa
						1					1	2	3
2	3	4	5	6	7	8	4	5	6	7	8	9	10
9	10	11	12	13	14	15	11	12	13	14	15	16	17
16	17	18	19	20	21	22	18	19	20	21	22	23	24
23	24	25	26	27	28	29	25	26	27	28	29	30	31
30	31												

sunday	monday	tuesday	wednesday	thursday	friday	saturday
30	31	1	2	3	4	5
6	Labor Day 7 NO COLLECTION	8 Monday Collection Place Bulk Items on Tree Lawn	9 Tuesday Collection	10 Wednesday Collection	Rosh Hashanah Begins 11 Thursday Collection	12 Friday Collection
13	14 Place Bulk Items on Tree Lawn	15	16	17	18	19
Yom Kippur Begins 20	21 Place Bulk Items on Tree Lawn	22	23	24	25	26
27	28 Place Bulk Items on Tree Lawn	29	30	1	2	3

Hispanic Heritage Month	Regular Collection Day	Bulk Collection Week
	A. Monday	1 <sup>st</sup> full week of the month
	B. Tuesday	2 <sup>nd</sup> full week of the month
	C. Wednesday	3 <sup>rd</sup> full week of the month
	D. Thursday or Friday	4 <sup>th</sup> full week of the month





# City Vehicle Maintenance

On any given day, depending on the season, you'll likely see a City vehicle—be it a police car, a recycling truck, or a snowplow—on the roads of Cleveland Heights. But what happens when one of those vehicles breaks down? Luckily, we have in-house repair staff at our City service garage, located at 14200 Superior Road. There, our Division of Vehicle Maintenance crew is busy across two shifts making sure that the trucks and cars we need to keep our neighborhoods safe and clean are humming along.

This crew is responsible for both major and minor repairs and preventative maintenance of almost all City vehicles, except the Fire Division, which oversees its own fleet at Fire Stations 1 and 2.

Upkeep required at certain mileage intervals (such as engine checks, oil changes, filter replacements, etc.) are typically done during the first shift, ensuring the longevity and compliance of our vehicles.

Heftier repairs typically take place during the second shift, when there are fewer interruptions.

Whenever you see a City vehicle picking up your trash bin or sweeping your street, remember that a Vehicle Maintenance crew member has kept it up and running for continuous City services.

**\*Vehicle Maintenance team checking on city vehicles.**



10

2026

October

September							November						
su	mo	tu	we	th	fr	sa	su	mo	tu	we	th	fr	sa
		1	2	3	4	5	1	2	3	4	5	6	7
6	7	8	9	10	11	12	8	9	10	11	12	13	14
13	14	15	16	17	18	19	15	16	17	18	19	20	21
20	21	22	23	24	25	26	22	23	24	25	26	27	28
27	28	29	30				29	30					

sunday	monday	tuesday	wednesday	thursday	friday	saturday
27	28	29	30	1	2	Shredding Day 3
4	5 Place Bulk Items on Tree Lawn	6	7	8	9	10
11	12 Indigenous Peoples' Day Place Bulk Items on Tree Lawn	13	14	15	16	17
18	19 Fall Loose Leaf Collection Begins Place Bulk Items on Tree Lawn	20	21	22	23	24
25	26 Place Bulk Items on Tree Lawn	27	28	29	30 Bagged Yard Waste Collection Ends	Halloween 31

Breast Cancer Awareness Month

Notes: Shredding Day has a 10 box maximum.

Regular Collection Day	Bulk Collection Week
A. Monday	1 <sup>st</sup> full week of the month
B. Tuesday	2 <sup>nd</sup> full week of the month
C. Wednesday	3 <sup>rd</sup> full week of the month
D. Thursday or Friday	4 <sup>th</sup> full week of the month



# Bulk Leaf Pickup

**\*City truck used for bulk leaf pickup.**

**Bulk leaf pickup typically begins in November and rolls out in three phases through mid-December.**

In the fall, and in advance of the first pickup, the City posts an interactive map on its website, under the Public Works page, where a resident can type in their address to find out when their street is scheduled for loose-leaf pickup. The map is updated regularly in case of delays due to inclement weather.

Residents are asked to place their loose leaves in piles on the tree lawn area between the street and the sidewalk in advance of their scheduled collection week. Leaves should not be placed in the street where compacted leaves can cause flooding, and frozen leaves can create slippery road conditions for motorists.

Want an alternative to all that raking? Consider composting your leaves, leaving them to decompose naturally over garden beds, or mulching them with your lawnmower for easier breakdown and a quicker nutrient infusion for your soil.

**Please note: Kraft bags are only collected from May through October. Kraft bags should only contain yard waste.**

- Leaves and yard waste will **NOT** be collected in plastic bags.
- Brush, tree, and hedge trimmings must be cut and tied into bundles not more than four feet in length and two feet in diameter in order to be collected on a regularly scheduled trash pickup day. Brush that is too large to be tied into bundles can be picked up for an additional charge; arrangements must be made in advance by calling the Utilities Department at **216-291-5995**, or by completing the Bulk Pickup/Loose Brush Request Form on the City's website.



11

2026  
November

October							December						
su	mo	tu	we	th	fr	sa	su	mo	tu	we	th	fr	sa
				1	2	3	1	2	1	2	3	4	5
4	5	6	7	8	9	10	6	7	8	9	10	11	12
11	12	13	14	15	16	17	13	14	15	16	17	18	19
18	19	20	21	22	23	24	20	21	22	23	24	25	26
25	26	27	28	29	30	31	27	28	29	30	31		

sunday	monday	tuesday	wednesday	thursday	friday	saturday
Daylight Saving Time Ends 1	2	3	4	5	6	7
	Place Bulk Items on Tree Lawn					
8	9	10	Veterans Day 11	12	13	14
	Place Bulk Items on Tree Lawn		NO COLLECTION	Wednesday Collection	Thursday Collection	Friday Collection
15	16	17	18	19	20	21
	Place Bulk Items on Tree Lawn					
22	23	24	25	Thanksgiving 26	City Hall Closed 27	28
	Place Bulk Items on Tree Lawn			NO COLLECTION	Thursday Collection	Friday Collection
29	30	1	2	3	4	5

Native American Heritage Month

Regular Collection Day	Bulk Collection Week
A. Monday	1 <sup>st</sup> full week of the month
B. Tuesday	2 <sup>nd</sup> full week of the month
C. Wednesday	3 <sup>rd</sup> full week of the month
D. Thursday or Friday	4 <sup>th</sup> full week of the month



# Be Safe in the Snow

The tried and true Farmer's Almanac, along with regional meteorologists, are predicting a colder, snowier winter this year in Northeast Ohio. Our public works and public safety teams are always on-call to keep residents, business owners, visitors, and commuters safe; but we recommend also following these tips for driving in inclement weather:

- Before you drive, completely clear your windows, mirrors, lights, and roof of all snow and ice.
- Ensure your tires have good tread, your battery is strong, your wiper blades are in good condition, and you have plenty of windshield wiper fluid.
- Make sure your cell phone is fully charged.
- Make sure your vehicle's tires are properly inflated and have a minimum tread depth of 5/32" to provide traction and tire adhesion to wet or snowy roads.
- In case of an emergency, include a first-aid kit, blankets, a flashlight, jumper cables, a small shovel, food, water, an extra hat and gloves, and a phone charger.
- Remember that posted speed limits are for dry conditions. Reduce your speed to match the road conditions.
- Double or triple the normal following distance to give yourself more time to stop. A distance of five to six seconds is a good guideline. Also, stay far behind snowplows, as the driver may have limited visibility and the road ahead of them could be worse.
- Avoid hard braking. Press the brake pedal firmly and smoothly. If you don't have ABS, gently pump the brakes. If you skid, steer in the direction of the skid and ease off the brake pedal.
- When going uphill or on slippery surfaces, use a lower gear to maintain traction and avoid wheel spin.
- You need to be in full control at all times, so do not use cruise control on snowy or icy roads.
- Turn on your headlights, not just your daytime running lights, to increase your visibility to other drivers.

## When clearing snow at your home:

- Please do not throw snow from driveways and sidewalks into the street, and do not block sidewalks while plowing your driveway.
- During heavy snow events, refrain from parking vehicles in the street and/or near the edge of the driveway and street. Doing so can slow clearing operations.
- Please **DO NOT** place your trash cans in the street.



12

2026

December

November							January						
su	mo	tu	we	th	fr	sa	su	mo	tu	we	th	fr	sa
1	2	3	4	5	6	7						1	2
8	9	10	11	12	13	14	3	4	5	6	7	8	9
15	16	17	18	19	20	21	10	11	12	13	14	15	16
22	23	24	25	26	27	28	17	18	19	20	21	22	23
29	30						24	25	26	27	28	29	30
							31						

sunday	monday	tuesday	wednesday	thursday	friday	saturday
29	30	1	2	3	Chanukah Begins 4	5
6	7	8	9	10	11	12
	Place Bulk Items on Tree Lawn					
13	14	15	16	17	18	19
	Place Bulk Items on Tree Lawn					
20	21	22	23	24	Christmas Day 25	Kwanzaa Begins 26
	Place Bulk Items on Tree Lawn				NO COLLECTION	Friday Collection
27	28	29	30	New Year's Eve 31	1	2
	Place Bulk Items on Tree Lawn					

Universal Human Rights Month	Regular Collection Day	Bulk Collection Week
	A. Monday	1 <sup>st</sup> full week of the month
	B. Tuesday	2 <sup>nd</sup> full week of the month
	C. Wednesday	3 <sup>rd</sup> full week of the month
	D. Thursday or Friday	4 <sup>th</sup> full week of the month

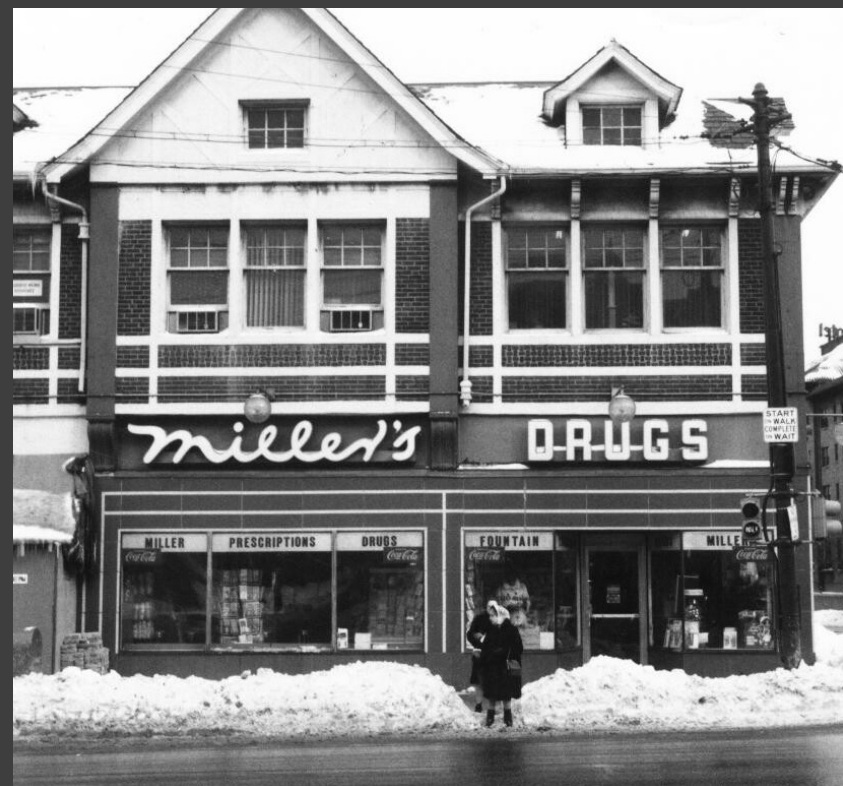




# Sanitary Code

FOR THE  
VILLAGE of  
CLEVELAND  
HEIGHTS

PASSED DECEMBER 2ND, 1918





# Cleveland Heights Roads of Yore

Check out these archival photos of the roads of Cleveland Heights and imagine with us what it must have been like for our former Public Works employees to navigate snowy conditions, road repairs, tree plantings, refuse pickup, sewer systems, and more!

**We've always relied on our Public Works department to keep our City clean, aesthetic, and safe to navigate.**





# The Division of Forestry

## Cleveland Heights is a Tree City!

The Arbor Day Foundation has recognized Cleveland Heights as a Tree City USA for **47 years**.

The Tree City USA Growth Award is presented by the Arbor Day Foundation to participating Tree City USA communities that demonstrate higher levels of tree care and community engagement during the calendar year.

Cleveland Heights has received the Growth Award for the last 7 years.



Want a **FREE TREE** planted in your tree lawn? Call **216-691-7300**, or email [pwd@clvhts.com](mailto:pwd@clvhts.com), and the Forestry Division will put you on its Spring or Fall tree-planting rotation.





# The Division of Streets

## Keeping Our Streets Functional

The Cleveland Heights Street Maintenance Division is responsible for providing a healthy, clean, and aesthetically acceptable environment through the effective management of street cleaning and maintenance functions consisting of:

- Crack Filling
- Salting/Brining
- Curb Repair
- Snow Plowing & Removal
- Leaf Collection
- Street Line Striping
- Pothole Repair
- Other Duties as Needed

Standard practice is to apply cold patch to potholes during the colder months, and to apply hot patch typically starting in April. A rapid freeze-thaw cycle—similar to the one we experienced in February 2025—can wreak havoc on the roads, creating cracks and potholes. With over 300 miles of roadway in Cleveland Heights, our street team appreciates when residents alert the MAC about needed road repairs. (See the last page for more information about the MAC.)

Our Street Division crew will be getting two new vehicles by March 2026, adding to its fleet of modular leaf pick-up and snow removal trucks.

This year, with the addition of brine-making equipment, the Street Maintenance crew will begin preemptively applying a brine solution to main roads, hills, school zones, and major intersections ahead of storms to reduce ice buildup and expedite plowing. Rock salt is both rough on our roads and our watershed, making the Ohio EPA-approved brine solution a welcome addition to our snow-removal tools.





# Cleveland Heights Recycling



## Place these items in your recycling cart:



**Aluminum Containers**  
Emptied and rinsed



**Paper & Cardboard**  
Emptied and flattened



**Glass Bottles & Jars**  
Emptied and rinsed



**Plastic Bottles, Jugs, & Tubs**  
Emptied and rinsed,  
with the lid attached



**Paper & Plastic Cups**  
Emptied and rinsed,  
discard straws and lids



**Cardboard Cartons**  
Emptied and rinsed,  
discard lids and flatten

## Wait until your recycling cart is full to place it out for collection:

- Our drivers can complete their routes more quickly.
- It takes less gas for our drivers to complete their routes, saving money.
- Our trucks spend less time idling, reducing emissions.

## Recycling Yard Waste and Leaves

From May through November, Cleveland Heights collects and recycles residential yard waste on the same day it collects your refuse and recycling carts.

Yard waste, grass clippings, leaves, and small branches may be recycled. Place yard waste into paper bags and tie brush into bundles.

Do not place inorganic materials with yard waste and fold the paper bags shut if possible.

### Paper bags and tied brush bundles should:

- Bundles should be no more than two feet high and four feet long and must be tied.
- Be placed at least three feet away from refuse/recycling carts.
- Total no more than 10 per collection.
- Weigh no more than 40 pounds each.

## Other Recycling

Many items can be recycled, reused, or donated elsewhere.



**E-Waste**



**Household Hazardous Waste**



**Bulk Collection**



**Construction Material**



**Plastic Bags**



**Clothing**



# Cleveland Heights Proper Disposal

## Special Care Disposal

Some household items require special handling for proper disposal. Some products may catch fire, react, or explode when under certain circumstances, others may be corrosive or toxic or just otherwise dangerous. **Some items include:**



Needles & Sharps



Medications



Fluorescent Bulbs



HHW, See Below

Medications in pill form may be disposed of at the City's Drug Drop Box, located in the Police Department's lower-level lobby. **Needles and liquids are not permitted.**

## Household Hazardous Waste

Household Hazardous Waste (HHW) may result in injury to people or animals that come into contact with it and also has the potential to contaminate water sources if not handled correctly.

**The City of Cleveland Heights collects HHW on regular collection days.**

- Keep all HHW in their original bottles with their labels attached and place the items into a box that is marked "HHW"
- Place the HHW box on the tree lawn at least three feet from other disposal items.
- Never mix potential HHW items, and never place them into refuse or recycling carts.

## E-Waste and Tech Trash

The location where residents can drop off "techno trash" is now located at the city's Service Center at **14200 Superior Avenue**, behind the Foundation Honda dealership.

The city has placed a bin where tech trash can be dropped off. Drop-off hours are **Monday-Friday from 7am-3:30pm.**

## Household Hazardous Waste Examples:

Antifreeze	Batteries
Brake Fluid	Chlorine Bleach
Contact Cement	Drain Cleaners
Fire Extinguishers	Flea Collars and Sprays
Herbicides	Insect Repellent
Kerosene	Lawn Chemicals
Lighter Fluid	Nail Polish Remover
Old Propane Tanks	Oven Cleaners
Paints	Pesticides
Pool Chemicals	Toilet Cleaners
Used Motor Oil	<b>And Many More!</b>





# Cleveland Heights Resources

## The Mayor's Action Center (MAC)

The MAC is a tool for communicating issues to, and asking questions of, the City. There are four options for making contact: by downloading the MAC App for smart phones, by email, by phone, or by completing an online form.

The MAC is run by a human being! So no need to worry about your issue just being overlooked. Regardless of which option a person uses to submit an issue, all requests are overseen by the MAC Coordinator, a full-time City staff person who directs them to the appropriate departments for follow up and completion.

**CALL:**  
**216-291-2323**

**EMAIL:**  
**mac@clevelandheights.gov**

**SCAN:**



## When is My Collection Day?

Every Cleveland Heights street is assigned a scheduled collection day. Follow the steps below to find your collection day.

1. Visit [clevelandheights.gov/944/Collection-Schedule](http://clevelandheights.gov/944/Collection-Schedule) or scan the QR code below.
2. Enter your home address.
3. View the next scheduled pick-up for your home as well as additional information regarding refuse and recycling.

You are also able to sign-up for reminders to put out your carts.

Scan here for the  
collection schedule:





# 2027 Calendar

## January 2027

su	mo	tu	we	th	fr	sa
					1	2
3	4	5	6	7	8	9
10	11	12	13	14	15	16
17	18	19	20	21	22	23
24	25	26	27	28	29	30
31						

## February 2027

su	mo	tu	we	th	fr	sa
	1	2	3	4	5	6
7	8	9	10	11	12	13
14	15	16	17	18	19	20
21	22	23	24	25	26	27
28						

## March 2027

su	mo	tu	we	th	fr	sa
	1	2	3	4	5	6
7	8	9	10	11	12	13
14	15	16	17	18	19	20
21	22	23	24	25	26	27
28	29	30	31			

## April 2027

su	mo	tu	we	th	fr	sa
				1	2	3
4	5	6	7	8	9	10
11	12	13	14	15	16	17
18	19	20	21	22	23	24
25	26	27	28	29	30	

## May 2027

su	mo	tu	we	th	fr	sa
						1
2	3	4	5	6	7	8
9	10	11	12	13	14	15
16	17	18	19	20	21	22
23	24	25	26	27	28	29
30	31					

## June 2027

su	mo	tu	we	th	fr	sa
		1	2	3	4	5
6	7	8	9	10	11	12
13	14	15	16	17	18	19
20	21	22	23	24	25	26
27	28	29	30			

## July 2027

su	mo	tu	we	th	fr	sa
				1	2	3
4	5	6	7	8	9	10
11	12	13	14	15	16	17
18	19	20	21	22	23	24
25	26	27	28	29	30	31

## August 2027

su	mo	tu	we	th	fr	sa
1	2	3	4	5	6	7
8	9	10	11	12	13	14
15	16	17	18	19	20	21
22	23	24	25	26	27	28
29	30	31				

## September 2027

su	mo	tu	we	th	fr	sa
			1	2	3	4
5	6	7	8	9	10	11
12	13	14	15	16	17	18
19	20	21	22	23	24	25
26	27	28	29	30		

## October 2027

su	mo	tu	we	th	fr	sa
					1	2
3	4	5	6	7	8	9
10	11	12	13	14	15	16
17	18	19	20	21	22	23
24	25	26	27	28	29	30
31						

## November 2027

su	mo	tu	we	th	fr	sa
	1	2	3	4	5	6
7	8	9	10	11	12	13
14	15	16	17	18	19	20
21	22	23	24	25	26	27
28	29	30				

## December 2027

su	mo	tu	we	th	fr	sa
			1	2	3	4
5	6	7	8	9	10	11
12	13	14	15	16	17	18
19	20	21	22	23	24	25
26	27	28	29	30	31	



Public Works is committed to providing a superior level of public service to the residents of Cleveland Heights and maintaining the City's infrastructure, in an efficient and cost-effective manner.



**Department of Public Works**

40 Severance Circle  
Cleveland Heights, 44118

**Cleveland Heights**