

# Compton Greenway Project Implementation



September 14<sup>th</sup>, 2022

# Agenda


---

- Project Background
  - Corridor Study
  - A model for future neighborhood traffic calming
- Upcoming Design Projects
  - Mini Roundabouts
  - Pock Park Connector
  - Overall Design Process
- Meeting Wrap Up & Next Steps


# Cleveland Heights Complete & Green Streets Policy

---

- roadways that are designed and operated to comfortably and safely accommodate all users regardless of age and ability
- inclusive of pedestrians, cyclists, transit riders, delivery and service personnel and emergency responders
- another intent is to reduce, accommodate and slow stormwater runoff as part of a comprehensive stormwater management system



**The City of Cleveland Heights wishes to study alternative designs that would collectively afford pedestrians, bicyclists and nearby residents more comfortable and more encompassing use of the Compton Rd. right-of-way using the concepts of “complete and green streets”**



*Compton Greenway Study Focus*

# Compton Greenway Study Goals

---

1. to promote re-investment in a neighborhood with current underutilized and vacant properties
2. to provide both safe and comfortable conditions for walking, running and bicycling
3. to maximize pedestrian / bicyclist access to Cain Park from this neighborhood

# Public Engagement Conducted During Study Period

Cain Park Arts Festival



Neighborhood Walking Tour



Community Meeting





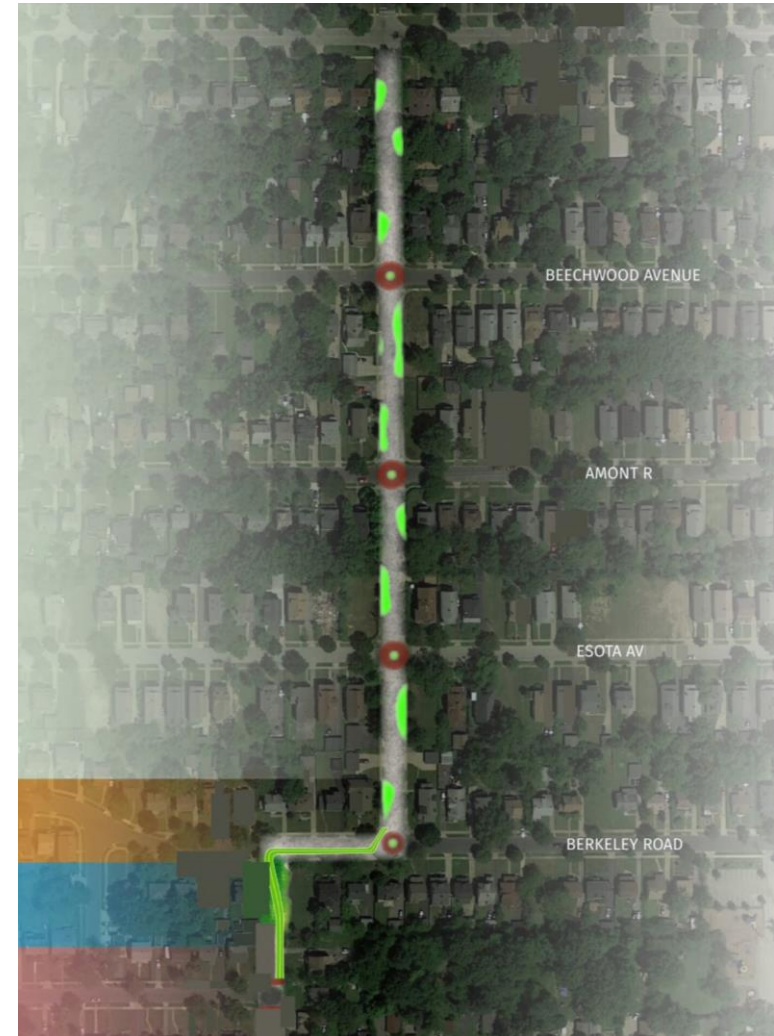
# Compton Road Greenway Concepts

- Prior Compton Study looked at 4 theme zones
- Our work with Toole Design is on Zones 1, 2 and 3



# Compton Greenway Theme Zones 1 & 3

- North Compton Road Traffic calming  
Berkeley Road Connector through  
vacant lot to South Compton





# Upcoming Design Projects

---

Mini Roundabouts & the Pocket Park

# Mini Roundabouts

Common Questions we plan to cover today:

- What are they?
- How do I use them?
- How do they address speeding?
- What about the stop signs?



# What are they?

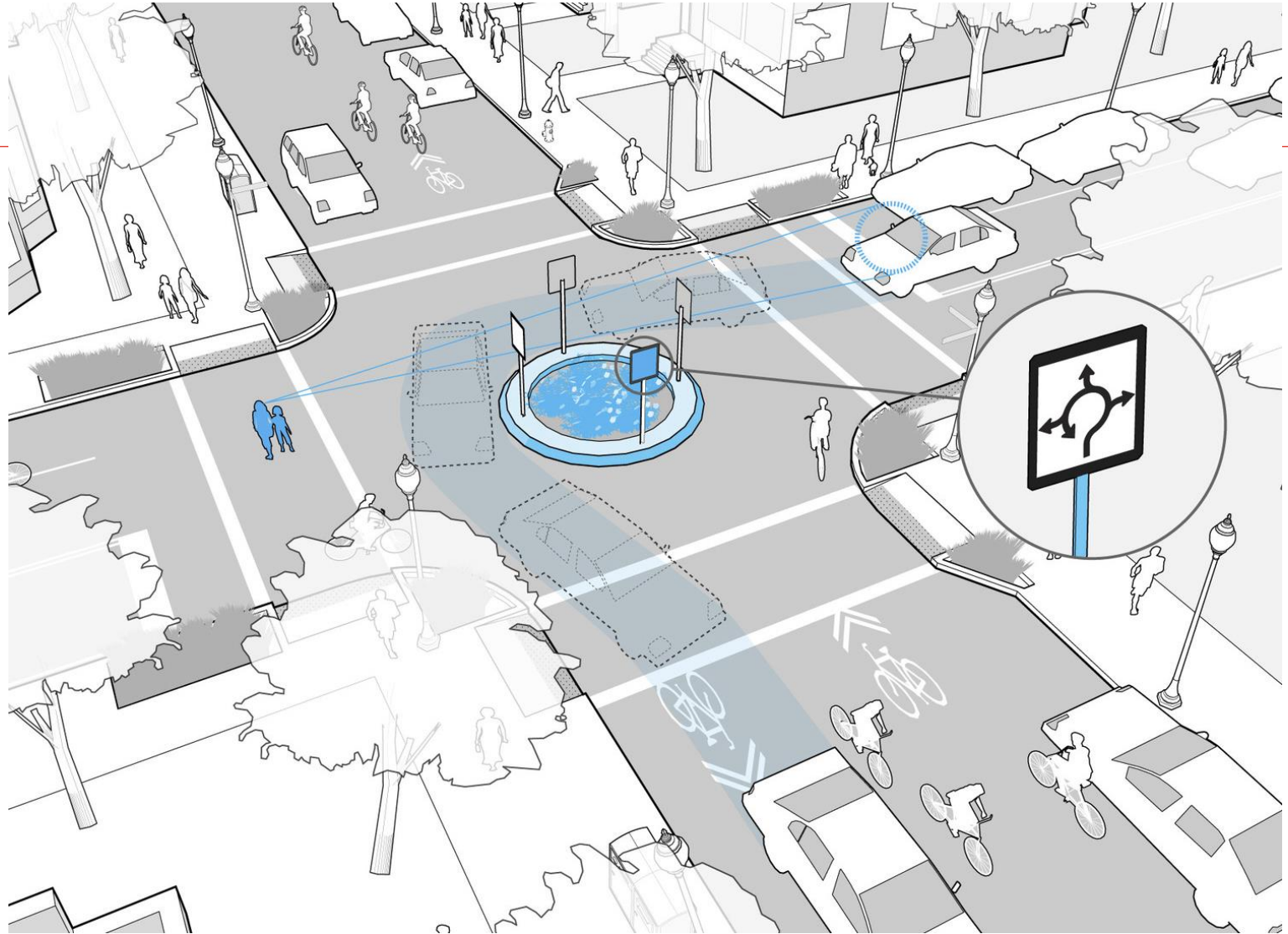


Mini Roundabouts are circular, raised islands on neighborhood streets that, through design, force motorists to use reduced speeds when entering or passing through an intersection. They often include plantings.



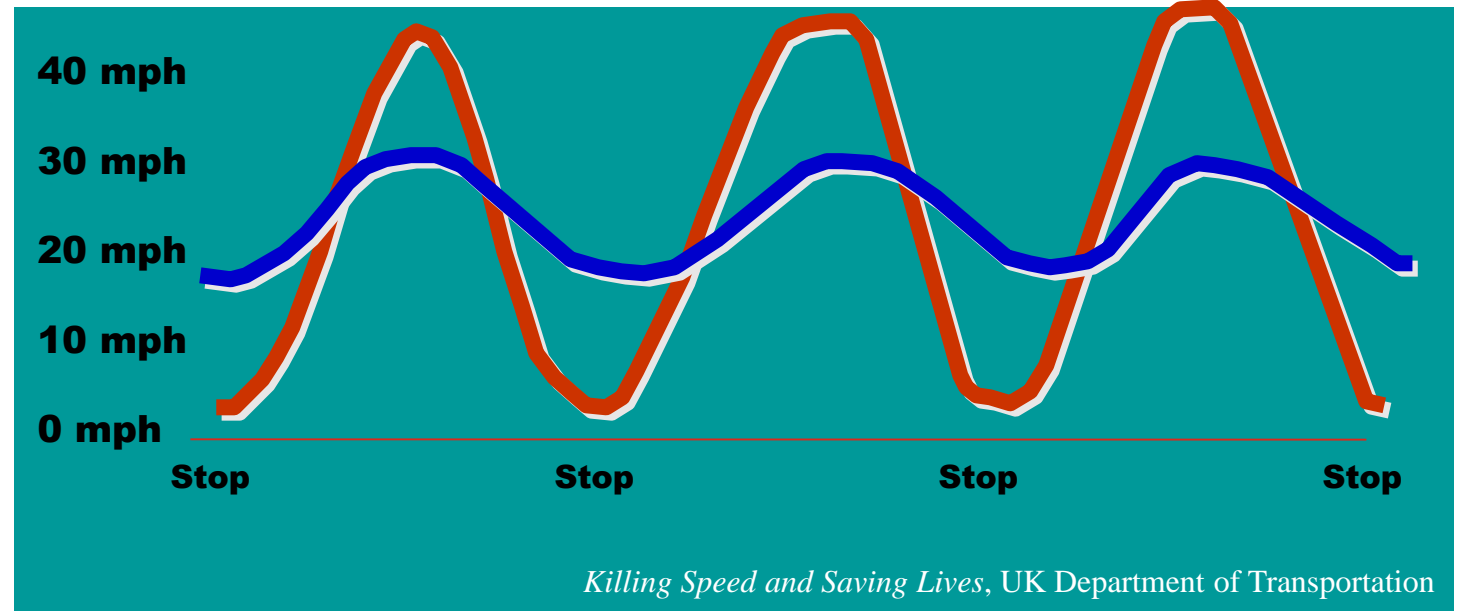
# How do I use them?

1. Yield to bicyclists or motorist already in the intersection
2. Once the intersection is clear, you may begin to enter the intersection
3. Stay to the right of the island, driving in a counterclockwise direction until you've reached your exit point





# How do mini roundabouts address speeding? What about the stop signs?

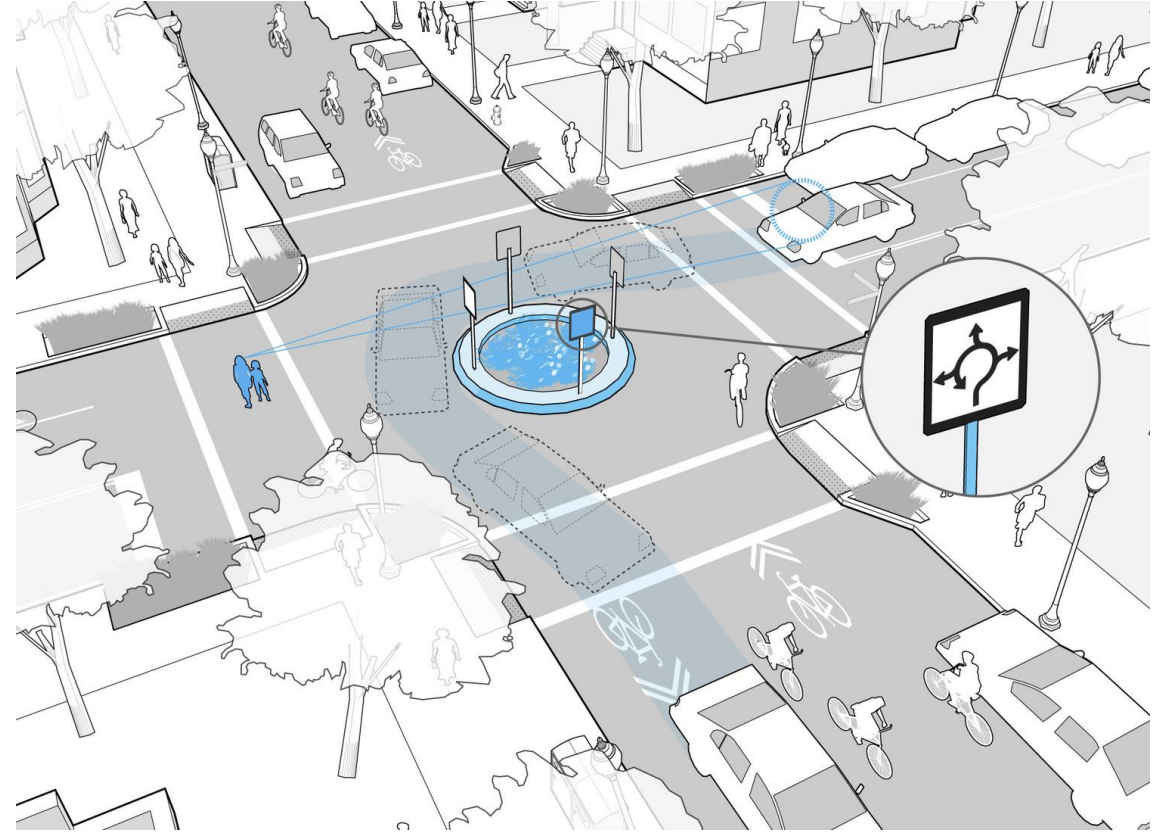


# How the Design Projects Tie to the City's Complete & Green Streets Policy

---

- roadways that are designed and operated to comfortably and safely accommodate all users regardless of age and ability
- inclusive of pedestrians, cyclists, transit riders, delivery and service personnel and emergency responders
- another intent is to reduce, accommodate and slow stormwater runoff as part of a comprehensive stormwater management system

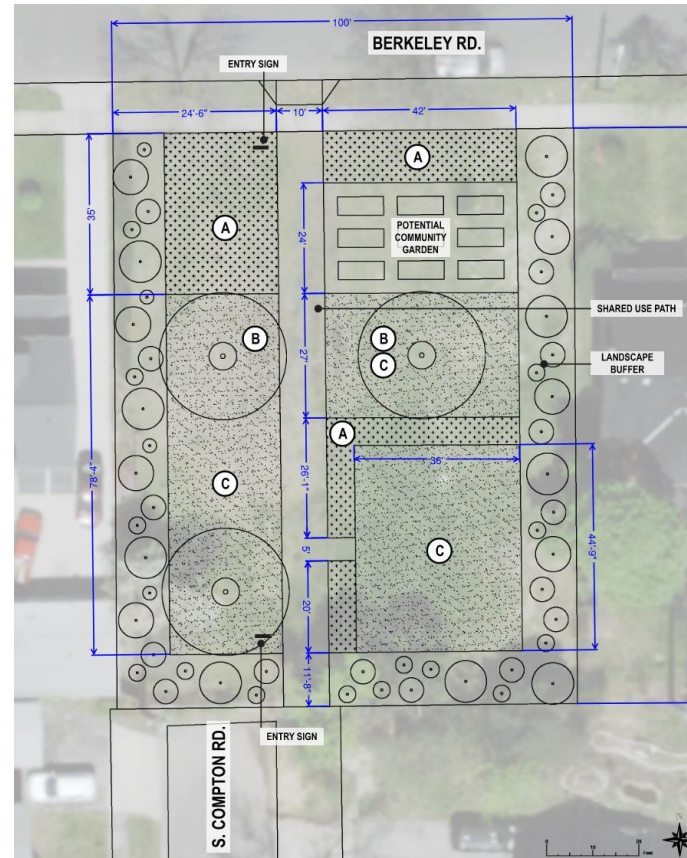
# What questions do you have about the mini roundabouts proposed?





# Pocket Park Connector

1. Goals & Overview
2. Proposed Park Elements
3. Handout Activity



Compton Greenway Pocket Park Draft Layout for Public Input  
3354/3360 Berkeley Rd., Cleveland Heights, OH  
Please return to Karen Knittel (kknittel@clevelandheights.gov or 40 Severance Circle) by September 19th.

Preliminary Concept - Not for Construction  
THIS IS A PRELIMINARY CONCEPT. FIELD VERIFICATION, SITE CONDITION ASSESSMENTS, ENGINEERING ANALYSIS AND DESIGN ARE NECESSARY PRIOR TO IMPLEMENTING ANY OF THE RECOMMENDATIONS CONTAINED HEREIN.

**TOOLE**  
DESIGN

## COMPTON GREENWAY POCKET PARK

### POTENTIAL PARK ELEMENTS

#### A Native Perennial Garden



At this time, the City has secured funding to build a path, provide seating, and plantings for the Berkeley Rd. Compton Greenway Pocket Park. Based on these parameters, we would like your input on the following:

1) Number each element in terms of priority for the park (1 being the lowest priority and 5 being the highest):

- ☐ Native perennial gardens (12" - 36" tall)
- ☐ Planted buffers
- ☐ Shade trees within the park
- ☐ Traditional bench seating
- ☐ Sculptural seating
- ☐ Preserved space for future elements (e.g. community garden, playground, etc...)

#### B Sculptural Seating



2) The park is proposed to include a shared use path between Berkeley Rd. and S. Compton Rd.. In this conceptual plan, we have placed the shared use path in direct alignment with the existing sidewalk along the east side of S. Compton Rd. This results in the most direct route through the pocket park and allows for the greatest flexibility to provide future activities and elements. Do you agree with this approach?

- ☐ Yes
- ☐ No

If no, please describe your preference.

#### C Flexible Open Space



3) Circle potential future elements that you would like to see at this park:

- A. Community garden
- B. Playground
- C. Bike facilities (e.g. bike racks, repair stations, etc...)
- D. Tables and chairs
- E. Art/sculptures
- F. Other:

**TOOLE**  
DESIGN



# Goals & Overview

- The pocket park will provide a high comfort pedestrian and bicycle connection between N. Compton/Berkley Road and S. Compton, creating a continuous greenway to Cain Park.
- The park will provide additional community public space for gatherings and recreation
- The park will “green” the Greenway

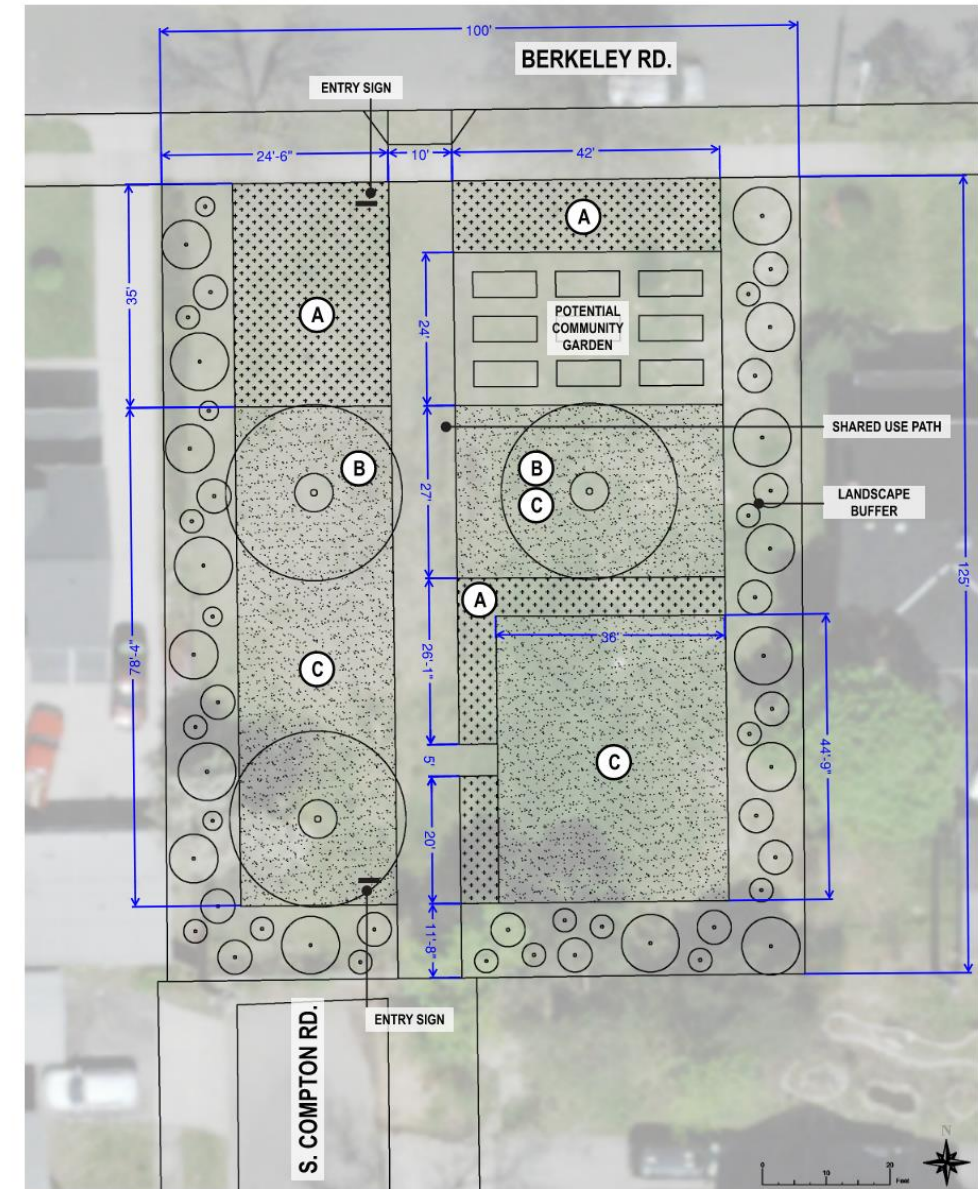
Pocket  
Park



# Proposed Park Elements

The park is proposed to include:

1. Shared Use Path
2. Seating
3. Plantings/Landscaping/Trees
4. Planning and preservation of space for future amenities, such as community gardens or flexible open space
5. Signage



Compton Greenway Pocket Park Draft Layout for Public Input  
3354/3360 Berkeley Rd., Cleveland Heights, OH  
Please return to Karen Knittel (kknittel@clevelandheights.gov or 40 Severance Circle) by September 19th.



# Share Use Path

- Path will provide a connection between N. Compton/Berkley Road and S. Compton Road
- Medians, plantings, or flex posts can be used to ensure motorists do not mistake this path as a roadway



Example: Median discourages motorists while still allowing access for maintenance vehicles

# Handout Activity

We'd like your feedback on the following:

- Proposed park elements
- Path layout
- Future amenities

Please return these to the City no later than September 19<sup>th</sup>!

## COMPTON GREENWAY POCKET PARK

### POTENTIAL PARK ELEMENTS

#### (A) Native Perennial Garden



#### (B) Sculptural Seating



#### (C) Flexible Open Space



### SURVEY QUESTIONS

At this time, the City has secured funding to build a path, provide seating, and plantings for the Berkeley Rd. Compton Greenway Pocket Park. Based on these parameters, we would like your input on the following:

1) Number each element in terms of priority for the park (1 being the lowest priority and 5 being the highest):

- \_\_\_\_\_ Native perennial gardens (12" - 36" tall)
- \_\_\_\_\_ Planted buffers
- \_\_\_\_\_ Shade trees within the park
- \_\_\_\_\_ Traditional bench seating
- \_\_\_\_\_ Sculptural seating
- \_\_\_\_\_ Preserved space for future elements (e.g. community garden, playground, etc...)

2) The park is proposed to include a shared use path between Berkeley Rd. and S. Compton Rd.. In this conceptual plan, we have placed the shared use path in direct alignment with the existing sidewalk along the east side of S. Compton Rd. This results in the most direct route through the pocket park and allows for the greatest flexibility to provide future activities and elements. Do you agree with this approach?

- \_\_\_\_\_ Yes
- \_\_\_\_\_ No

If no, please describe your preference.

---

---

---

---

3) Circle potential future elements that you would like to see at this park:

- A. Community garden
- B. Playground
- C. Bike facilities (e.g. bike racks, repair stations, etc...)
- D. Tables and chairs
- E. Art/sculptures
- F. Other:

---

---

---

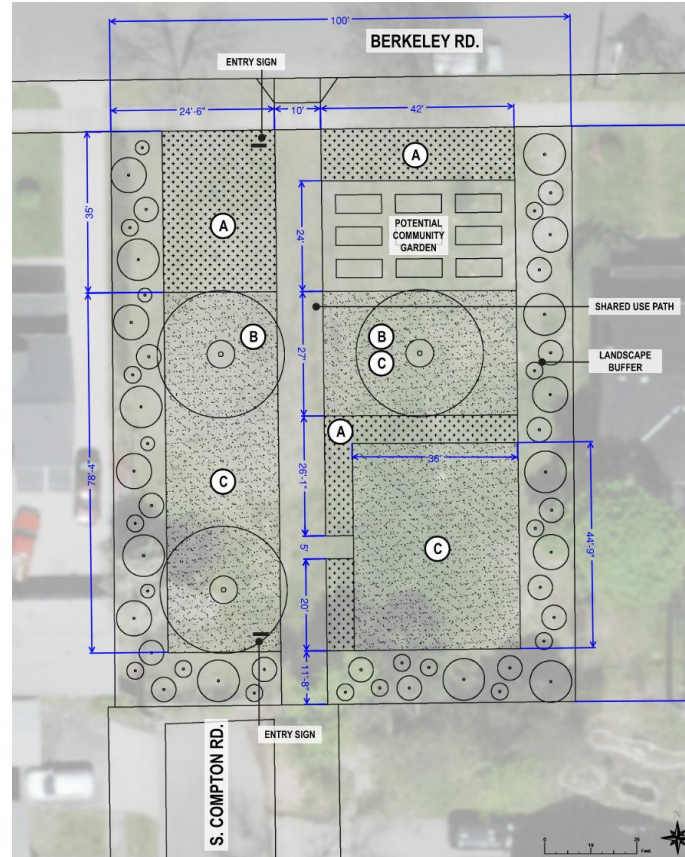
---



# What questions do you have about the pocket park or hand out activity?

The park is proposed to include:

1. Shared Use Path
2. Seating
3. Plantings/Landscaping/Trees
4. Planning and preservation of space for future amenities, such as community gardens or flexible open space
5. Signage



Compton Greenway Pocket Park Draft Layout for Public Input  
3354/3360 Berkeley Rd., Cleveland Heights, OH  
Please return to Karen Knittel (kknittel@clevelandheights.gov or 40 Severance Circle) by September 19th.

Preliminary Concept - Not for Construction  
THIS IS A PRELIMINARY CONCEPT. FIELD VERIFICATION, SITE CONDITION ASSESSMENTS, ENGINEERING ANALYSIS AND DESIGN ARE NECESSARY PRIOR TO IMPLEMENTING ANY OF THE RECOMMENDATIONS CONTAINED HEREIN.

**TOOLE**  
DESIGN

## COMPTON GREENWAY POCKET PARK

### POTENTIAL PARK ELEMENTS

### SURVEY QUESTIONS

#### A Native Perennial Garden



At this time, the City has secured funding to build a path, provide seating, and plantings for the Berkeley Rd. Compton Greenway Pocket Park. Based on these parameters, we would like your input on the following:

1) Number each element in terms of priority for the park (1 being the lowest priority and 5 being the highest):

- ☐ Native perennial gardens (12" - 36" tall)
- ☐ Planted buffers
- ☐ Shade trees within the park
- ☐ Traditional bench seating
- ☐ Sculptural seating
- ☐ Preserved space for future elements (e.g. community garden, playground, etc...)

#### B Sculptural Seating



2) The park is proposed to include a shared use path between Berkeley Rd. and S. Compton Rd.. In this conceptual plan, we have placed the shared use path in direct alignment with the existing sidewalk along the east side of S. Compton Rd. This results in the most direct route through the pocket park and allows for the greatest flexibility to provide future activities and elements. Do you agree with this approach?

- ☐ Yes
- ☐ No

If no, please describe your preference.

#### C Flexible Open Space



3) Circle potential future elements that you would like to see at this park:

- A. Community garden
- B. Playground
- C. Bike facilities (e.g. bike racks, repair stations, etc...)
- D. Tables and chairs
- E. Art/sculptures
- F. Other:

**TOOLE**  
DESIGN



**CLEVELAND**  
HEIGHTS

**TOOLE**  
DESIGN

# Mini Roundabout and Pocket Park Design Process

---

Public Engagement  
#1 to Solicit Final  
Feedback (today thru  
9/19)

Draft Construction  
Documents Prepared  
for City's Review

Public Engagement  
#2 to Share Design  
and Construction  
Schedule (11/2)

Final Construction  
Documents Prepared  
and Submitted (by  
12/31)

# Meeting Wrap Up & Next Steps

---

- Submit Pocket Park Activity Sheets to Karen by 9/19
- Meeting materials to be posted on the project website, including the meeting PowerPoint and a fact sheet  
(<https://www.clevelandheights.gov/1171/Compton-Road-Greenway-Study>)
- Staff to attend upcoming Boulevard Neighbors meeting to discuss
- Meeting #2 on 11/2 at 7 PM
- Feel free to email ideas to Karen – [kknittel@clevelandheights.gov](mailto:kknittel@clevelandheights.gov)